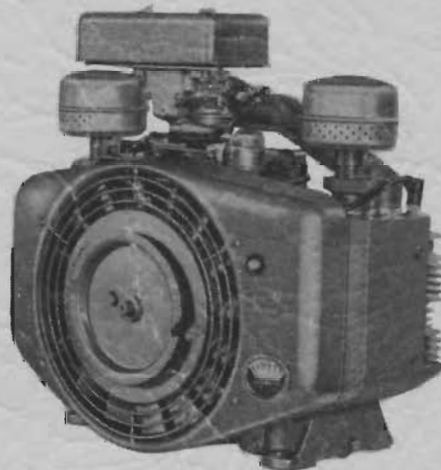


PARTS CATALOG

SERIES

CCKB

INDUSTRIAL ENGINES



FORM NUMBER
927-0404

ISSUE DATE
5-77
5GJ77

Printed in U.S.A.

GENERAL INFORMATION

INSTRUCTIONS FOR ORDERING REPAIR PARTS

INFORMATION ON THIS PAGE INCLUDED FOR OWNERS WHO HAVE PURCHASED THIS CATALOG.

For parts or service, contact the dealer from whom you purchased this equipment or refer to your Nearest Authorized Onan Parts and Service Center.

To avoid errors or delay in filling your parts order, please furnish all information requested.

Always refer to the nameplate on your unit:

1. Always give the MODEL and SPEC NO. and SERIAL NO.

Onan
MODEL AND SPEC NO. _____
SERIAL NO. _____
IMPORTANT - ALWAYS GIVE ABOVE NOS
- WHEN ORDERING PARTS
CHECK OIL LEVEL DAILY
CHANGE OIL EVERY 100 HOURS
OIL CAPACITY _____ QTS
BELOW 30°F ---- SAE 10W
ABOVE 30°F ---- SAE 30
FOR EXTREME OPERATING
TEMPERATURES. SEE YOUR
SERVICE MANUAL
BATTERY ----- _____ VOLT
MANUFACTURED BY
ONAN
DIVISION OF ONAN CORPORATION
MINNEAPOLIS, MINNESOTA, U.S.A.

For handy reference, insert "YOUR" nameplate information in the spaces above.

2. Do not order by reference number or group number; always use part number and description.
3. Give the part number, description and quantity needed of each item. If an older part cannot be identified, return the part prepaid to your dealer or nearest AUTHORIZED SERVICE STATION. Print your name and address plainly on the package. Write a letter to the same address stating the reason for returning the part.
4. State definite shipping instructions. Any claim for loss or damage to your unit in transit should be filed promptly against the transportation company making the delivery. Shipments are complete unless the packing list indicates items are back ordered.

Prices are purposely omitted from this Parts Catalog due to the confusion resulting from fluctuating costs, import duties, sales taxes, exchange rates, etc.

For current parts prices, consult your Onan Dealer, Distributor or Parts and Service Center.

"En esta lista de partes los precios se omiten de proposito, ya que bastante confusion resulto de fluctuaciones de los precios, derechos aduanales, impuestos de venta, cambios extranjeros, etc."

Consiga los precios vigentes de su distribuidor de productos "ONAN".

TABLE OF CONTENTS

TITLE	PAGE	
INTRODUCTION	2	
DATA TABLE	2	
STANDARD ENGINE GROUPS	2	
Crankshaft and Flywheel	3	
Block, Cylinder	4,5	
Oil System	6,7	
Camshaft	8	
Rod and Piston	8	
Gearcase	9	
Fuel System	10,11	
Spark Advance Mechanism - Key 1	12	
Pump Parts, Fuel	13	
Carburetor Parts - Begin Spec H	14	
Carburetor Parts - Spec G Only	15	
Ignition Magneto - Key 1	16	
Box, Breaker	17	
Ignition, Battery - Key 2	18,19	
Starter - Spec G and H	20	
Starter - Begin Spec J	21	
Governor	22	
Housing, Blower	22	
Service Kits and Miscellaneous	23	Optional Group
OPTIONAL EQUIPMENT GROUPS	23	Number
Alternator, Automotive Type - Left Side Mtg.	24	1
Alternator, Automotive Type - Right Side Mtg.	24	2
Alternator, Automotive Type - Top Mtg.	25	3
Alternator, Flywheel (Wico)	25	4
Alternator, Flywheel (Phelon)	26	5
Alternator, Flywheel - (Syncro)	26	6
Generator - Automotive Type	27	7
Filter, Spin On	27	8
Starter Redi Pull - Key 1	28	9
Gear Reduction - 3.3:1	29	10
Gear Reduction - 4:1	30	11
Clutch	31	12
Control, Top Mounted	31	13
Vacu Flo Cooling and Flywheel	32	14
Fuel System - Gas - Gasoline	33	15
Reservoir (Day) Tank - 1 Quart	34	16
Reservoir (Day) Tank - 2 Quart	34	17
Tank, Fuel - Side Mounted	35	18
Box, High Profile Breaker	36	19
Choke, Thermo Magnetic	37	20
Starting Motor, Solenoid Shift	38	21
Governor, Variable Speed	39	22
Fuel Filter Parts	39	23
Carburetor Parts - (141-0792) - Spec G Only	40	24
Carburetor Parts - (143-0338) - Spec G Only	41	25
Carburetor Parts - (143-0339) - Spec G Only	42	26
Carburetor Parts - (143-0340) - Spec G Only	43	27
Carburetor Parts - (141-0690) - Begin Spec H	44	28
Carburetor Parts - (141-0721) - Begin Spec H	45	29
Carburetor Parts - (141-0722) - Begin Spec H	46	30
Carburetor Parts - (141-0744) - Begin Spec H	47	31
Miscellaneous Parts	48,49	

INTRODUCTION

This catalog applies to the industrial CCKB Engines listed below and factory installed options. Parts are arranged in groups of related items. Each illustrated part is identified by a reference number corresponding to the same reference number in the parts list for that group. Parts illustrations are typical. Using the MODEL and SPEC NO. from the engine nameplate, select the Parts Key No. (1,2,etc., in the last column) that applies to your Engine Model and Spec No. This Parts Key No. represents parts that differ between models. Unless otherwise mentioned in the description, parts are interchangeable between models. Right and left engine sides are determined by *facing* the blower end (front) of the engine.

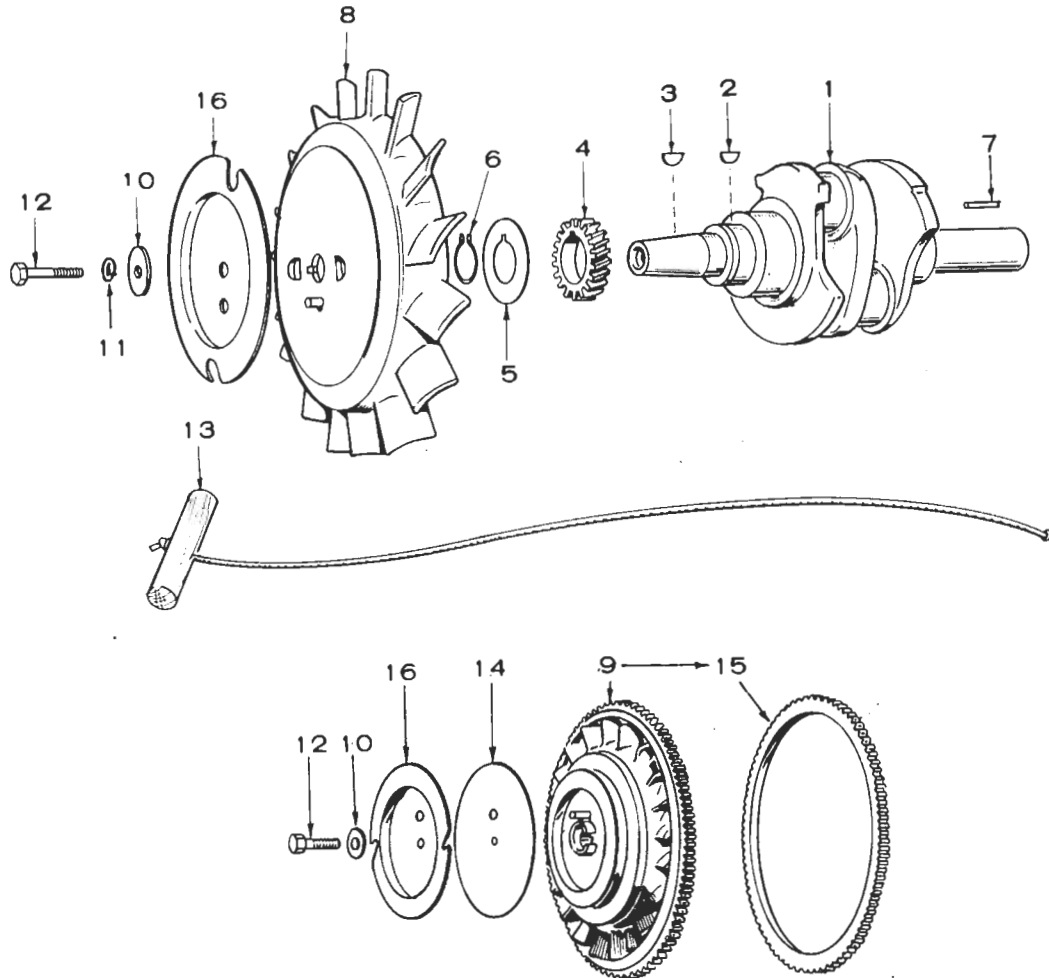
ENGINE DATA TABLE

MODEL AND SPEC NO.	PARTS KEY NO.
CCKB-S*	1
£CCKB-MS/*	2

- * - The Specification Letter Advances (A to B, B to C, etc.) with manufacturing changes.
- £ - New model designations shown, begin during 1969. Previous designations used a V in the model to designate Vacu-Flo cooling.

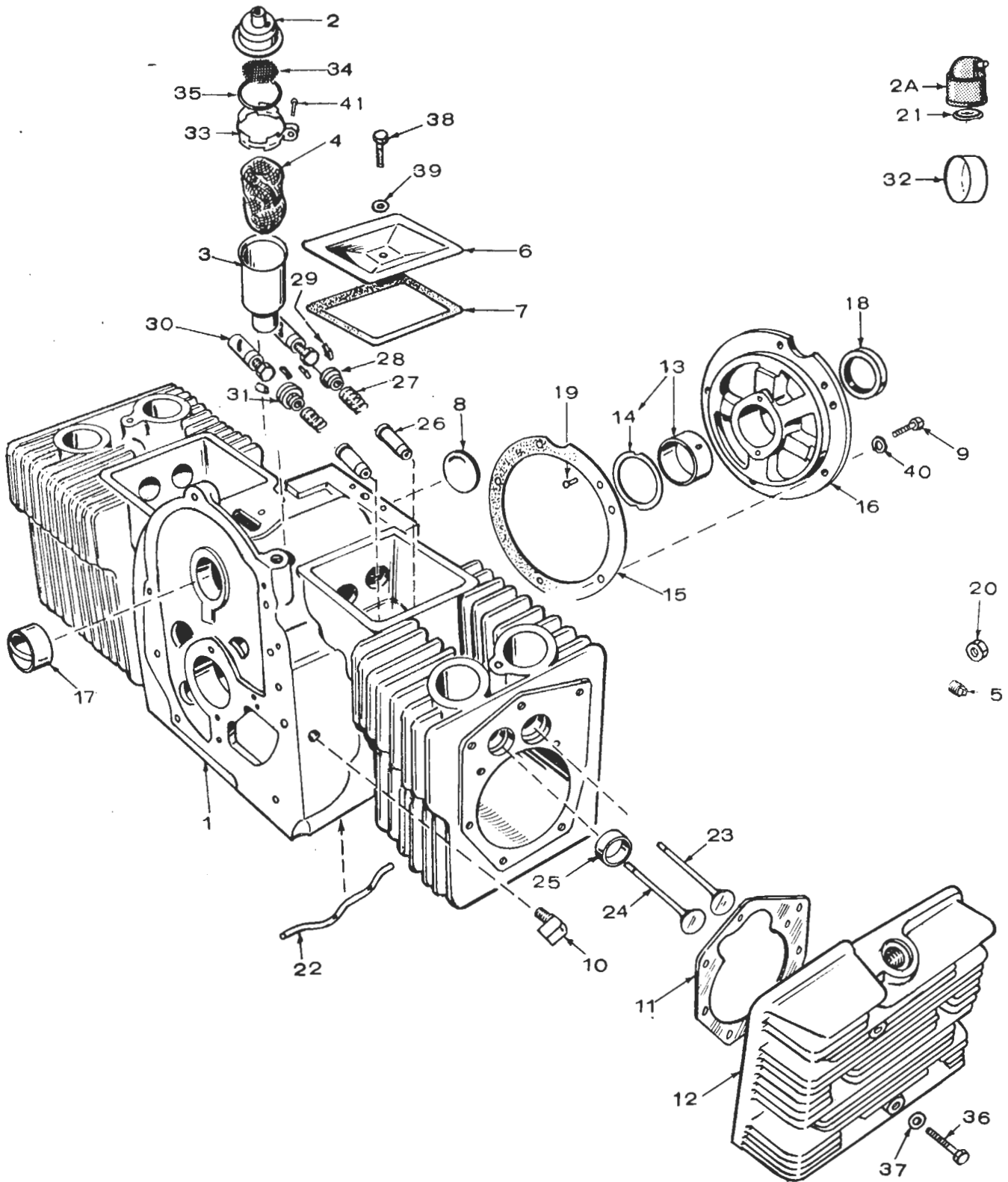
STANDARD ENGINE GROUPS

CRANKSHAFT AND FLYWHEEL GROUP



REF. NO.	PART NO.	QTY. USED	PART DESCRIPTION	REF. NO.	PART NO.	QTY. USED	PART DESCRIPTION
1	CRANKSHAFT			10	WASHER, FLAT - WHEEL MOUNTING		
	104-0486	1	Spec G and H	526-0017	1	Key 1 (15/32" ID x 1-1/4" OD x 1/4" Thk)	
	104-0872	1	Begin Spec J	526-0128	1	Key 2 (15/32" ID x 1-1/2" OD x 1/4" Thk)	
2	515-0001	1	Key, Crankshaft Gear Mounting	11	850-0055	1	Washer, Lock - Spring Flywheel Mounting
3	KEY, WHEEL MOUNTING			12	SCREW, WHEEL MOUNTING		
	515-0002	1	Spec G and H	104-0170	1	Key 1	
	515-0098	1	Begin Spec J	104-0369	1	Key 2 - Spec G and H	
4	104-0032	1	Gear, Crankshaft	104-0170	1	Key 2 - Begin Spec J	
5	104-0043	1	Washer, Crankshaft Gear Retainer	13	192-0083	1	Roper, Manual Starting
6	518-0014	1	Lock, Crankshaft Gear Washer	14	192-0296	1	Backplate - Rope Sheave
7	KEY, CRANKSHAFT STUB (order by length)			15	134-0673	1	Ring Gear, Flywheel - Key 2
	515-0198	1	2-1/2" lg	16	192-0308	1	Sheave, Rope
	515-0202	1	2-3/8" lg				
8	160-0761	1	Flywheel - Key 1				
9	FLYWHEEL (Includes Ring Gear)						
	134-1684	1	Key 2 - Spec G and H				
	134-2728	1	Key 2 - Begin Spec J				

CYLINDER BLOCK GROUP



CYLINDER BLOCK GROUP

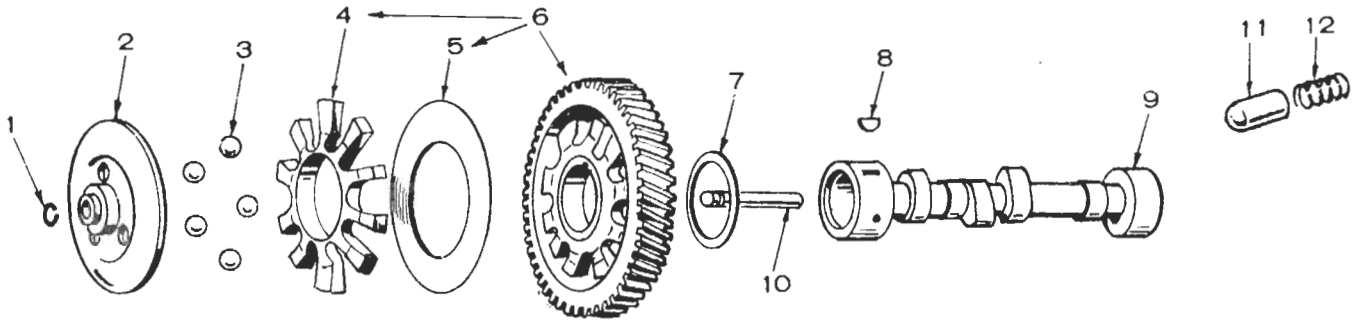
REF. NO.	PART NO.	QTY. USED	PART DESCRIPTION	REF. NO.	PART NO.	QTY. USED	PART DESCRIPTION
1	110-0915	1	Block Assembly, Cylinder (Includes Parts Marked *)	24	110-0880	2	Valve, Exhaust
2	123-0954	1	Cap and Valve, Breather - Begin Spec H	25	INSERT, EXHAUST VALVE SEAT		
2A	123-0787	1	Cap, Breather Tube - Spec G Only		110-0872	2	Standard
3	TUBE, BREATHER				110-0872-02	2	.002" Oversize
	123-0868	1	Spec G Only		110-0872-05	2	.005" Oversize
	123-0953	1	Begin Spec H		110-0872-10	2	.010" Oversize
4	123-0865	1	Baffle, Breather Tube		110-0872-25	2	.025" Oversize
5	505-0057	1	Plug (1/8"), Pipe - Oil Line Plug	26	110-0902	4	*Guide, Valve
6	110-0666	2	Cover, Valve Compartment	27	110-0539	4	Spring, Valve
7	110-0667	2	Gasket, Valve Cover	28	110-0893	2	Washer, Spring Retainer - Intake Valve
8	517-0048	1	*Plug, Camshaft Expansion	29	110-0639	8	Lock, Valve and Spring Retainer
9	800-0512	5	*Screw, Cap - Hex Head Bearing Plate Mounting - Replaces Stud and Nut Used on early models (5/16-18 x 1" lg)	30	TAPPET, VALVE		
10	502-0020	1	Elbow, Street - Oil Line		115-0006	4	Standard
11	110-0892	2	Gasket, Cylinder Head		115-0006-05	4	.005" Oversize
12	HEAD, CYLINDER			31	110-0904	2	Rotocap, Exhaust Valve
	110-0883	1	Left Hand (#1)	32	110-1283	1	*Cover, Timing Control (Also in Camshaft Group)
	110-0884	1	Right Hand (#2)	33	123-0951	1	Clamp, Breather Tube Cap - Begin Spec H
13	BEARING, CRANKSHAFT - FRONT AND REAR			34	123-0958	2	Screen, Breather Tube - Begin Spec H
	101-0450	2	Standard - Begin Spec J	35	509-0117	1	"O" Ring, Breather Tube Cap - Begin Spec H
	101-0450-02	2	.002" Undersize	36	SCREW, CAP - HEX HEAD - CYLINDER HEAD MOUNTING		
	101-0450-10	2	.010" Undersize		110-0879	8	5/16-18 x 1-1/4" lg
	101-0450-20	2	.020" Undersize		110-0022	10	5/16-18 x 1-3/4" lg
	101-0450-30	2	.030" Undersize	37	526-0122	18	Washer, Flat - Cylinder Head Mounting (11/32" ID x 23/32" OD x 10 Ga. Thk)
14	104-0575	2	*Washer, Crankshaft Bearing Thrust	38	800-0012	2	Screw, Cap - Hex Head Valve Cover Mounting (1/4-20 x 2-1/4" lg)
15	101-0115	1	*Gasket Kit, Bearing Plate	39	526-0063	2	Washer, Flat - Valve Cover Mounting (17/64" ID x 7/16" OD x 1/32" Thk)
16	101-0316	1	*Plate, Rear Bearing (Excludes Bearing)	40	850-0045	5	Washer, Lock - Spring - Bearing Plate Mounting (5/16")
17	101-0367	2	*Bearing, Camshaft Front and Rear (Precision)	41	809-0035	1	Screw, Tapping, Pan Head Breather Clamp (#8 x 3/4")
18	509-0041	1	Seal, Bearing Plate				
19	516-0072	4	*Pin, Main Bearing Stop				
20	110-0445	5	Nut (5/16-18), Bearing Plate Stud - Used on Early Models				
21	123-0315	1	Valve, Breather Tube - Spec G Only				
22	120-0386	1	*Tube, Crankcase Oil				
23	110-0881	2	Valve, Intake				

* - Parts Included In 110-0915
Cylinder Block Assembly

OIL SYSTEM GROUP

REF. NO.	PART NO.	QTY. USED	PART DESCRIPTION	REF. NO.	PART NO.	QTY. USED	PART DESCRIPTION
1	BASE, OIL			10	526-0066	1	Washer, Flat - Oil By-Pass (25/64" ID x 9/16" OD x 1/16" Thk)
	102-0468	1	Key 1				
	102-0339	1	Key 2 - Spec G and H	11	120-0140	1	Spring, Oil By Pass Valve
	102-0828	1	Key 2 - Begin Spec J	12	120-0398	1	Valve, Oil By Pass
2	TUBE, OIL FILL			13	120-0161	1	Gasket Kit, Oil Pump
	102-0508	1	Spec G and H	14	PLUG, OIL DRAIN		
	102-0674	1	Begin Spec J		505-0110	1	Some Early Model (3/8")
3	CAP AND INDICATOR, OIL FILL				505-0056	1	Late Models (1/2")
	123-0506	1	Key 1 - Spec G and H	15	102-0455	4	Screw, Cap - Hex Head Oil Base Mounting (3/8-16 x 1-1/4" lg)
	123-0762	1	Key 1 - Begin Spec J				
	123-0527	1	Key 2 - Spec G and H	16	850-0050	4	Washer, Lock - Spring Oil Base Mounting (3/8")
	123-0694	1	Key 2 - Begin Spec J				
4	123-0191	1	Gasket, Oil Fill Cap	17	821-0018	2	Screw, Cap - Hex Head - Oil Fill Tube Mounting (1/4-20 x 5/8" lg)
5	102-0158	1	Gasket, Oil Base				
6	CUP, OIL PUMP INTAKE			18	850-0040	2	Washer, Lock - Spring Oil Fill Tube Mounting (1/4")
	120-0413	1	Key 1				
	120-0648	1	Key 2	19	800-0007	2	Screw, Lock - Spring - Oil Pump Mounting (1/4-20 x 1" lg)
7	141-0078	1	Gasket, Oil Fill Tube Mounting				
8	120-0491	1	Pump, Oil	20	850-0040	2	Washer, Lock - Spring - Oil Pump Mounting (1/4")
9	801-0048	1	Screw, Cap - Hex Head Oil By-Pass (3/8-24 x 3/4" lg)				

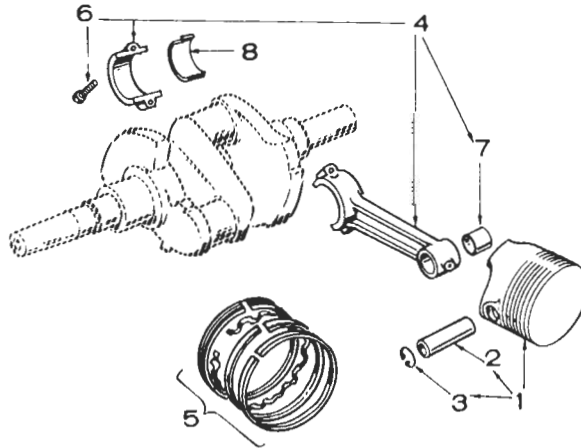
CAMSHAFT GROUP



REF. NO.	PART NO.	QTY. USED	PART DESCRIPTION	REF. NO.	PART NO.	QTY. USED	PART DESCRIPTION
1	150-0078	1	*Ring, Camshaft Center Pin	7	105-0004	1	Washer, Camshaft Gear Thrust
2	150-1116	1	*Cup, Governor	8	515-0001	1	Key, Camshaft Gear Mounting
3	510-0015	5	*Ball, - Governor	9	*CAMSHAFT 105-0234	1	Key 1 (Includes Center Pin and Spark Advance Mechanism Pin)
4	150-1257	1	Spacer, Governor Fly Ball, Begin Serial #370369 During Spec H		105-0238	1	Key 2 (Includes Center Pin)
5	150-0077	1	Plate, Governor Fly Ball, Begin Serial #370369 During Spec H	10	150-0075	1	*Pin, Center - Camshaft
6	105-0332	1	Gear, Camshaft (Includes Spacer & Plate)	11	105-0058	1	Plunger, Camshaft Thrust (Manually Controlled Engine)
				12	105-0059	1	Spring, Camshaft Plunger (Manually Controlled Engine)

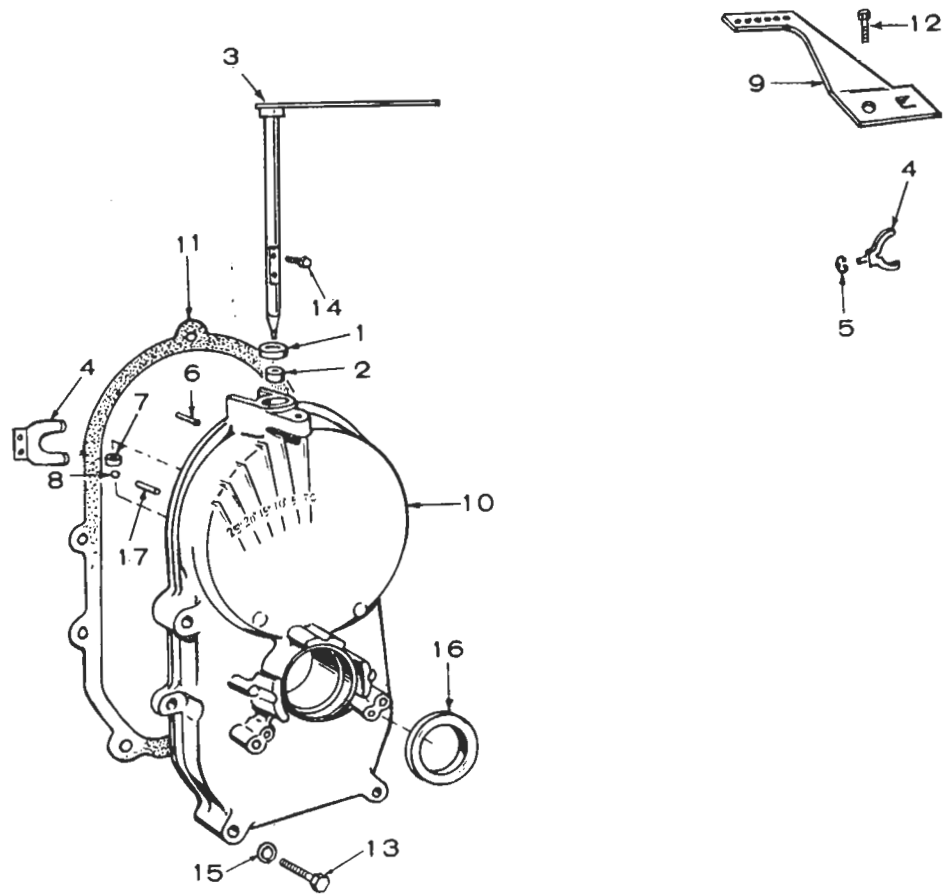
* - Parts Included in Camshaft

ROD AND PISTON GROUP



REF. NO.	PART NO.	QTY. USED	PART DESCRIPTION	REF. NO.	PART NO.	QTY. USED	PART DESCRIPTION
1	PISTON AND PIN (Includes Retaining Rings)			5	RING SET, PISTON		
			Piston Has Slotted Oil Ring Grooves (Top groove 5/32" from top of piston) - Standard	113-0153	2	Standard	
112-0136	2	Standard		113-0153-05	2	.005" Oversize	
112-0136-05	2	.005" Oversize		113-0153-10	2	.010" Oversize	
112-0136-10	2	.010" Oversize		113-0153-20	2	.020" Oversize	
112-0136-20	2	.020" Oversize		113-0153-30	2	.030" Oversize	
112-0136-30	2	.030" Oversize		113-0153-40	2	.040" Oversize	
112-0136-40	2	.040" Oversize		6	805-0010	4	Bolt, Place - Connecting Rod
2	112-0069	2	Pin, Piston	7	114-0036	2	Bushing, Piston Pin - Connecting Rod
3	112-0003	4	Ring, Piston Pin Retainer	8	BEARING, CONNECTING ROD		
4	114-0203	2	Rod Assembly, Connecting (Forged) - Includes Bushing and Place Bolts	114-0188	4	Standard	
				114-0188-02	4	.002" Undersize	
				114-0188-10	4	.010" Undersize	
				114-0188-20	4	.020" Undersize	
				114-0188-30	4	.030" Undersize	

GEARCASE GROUP

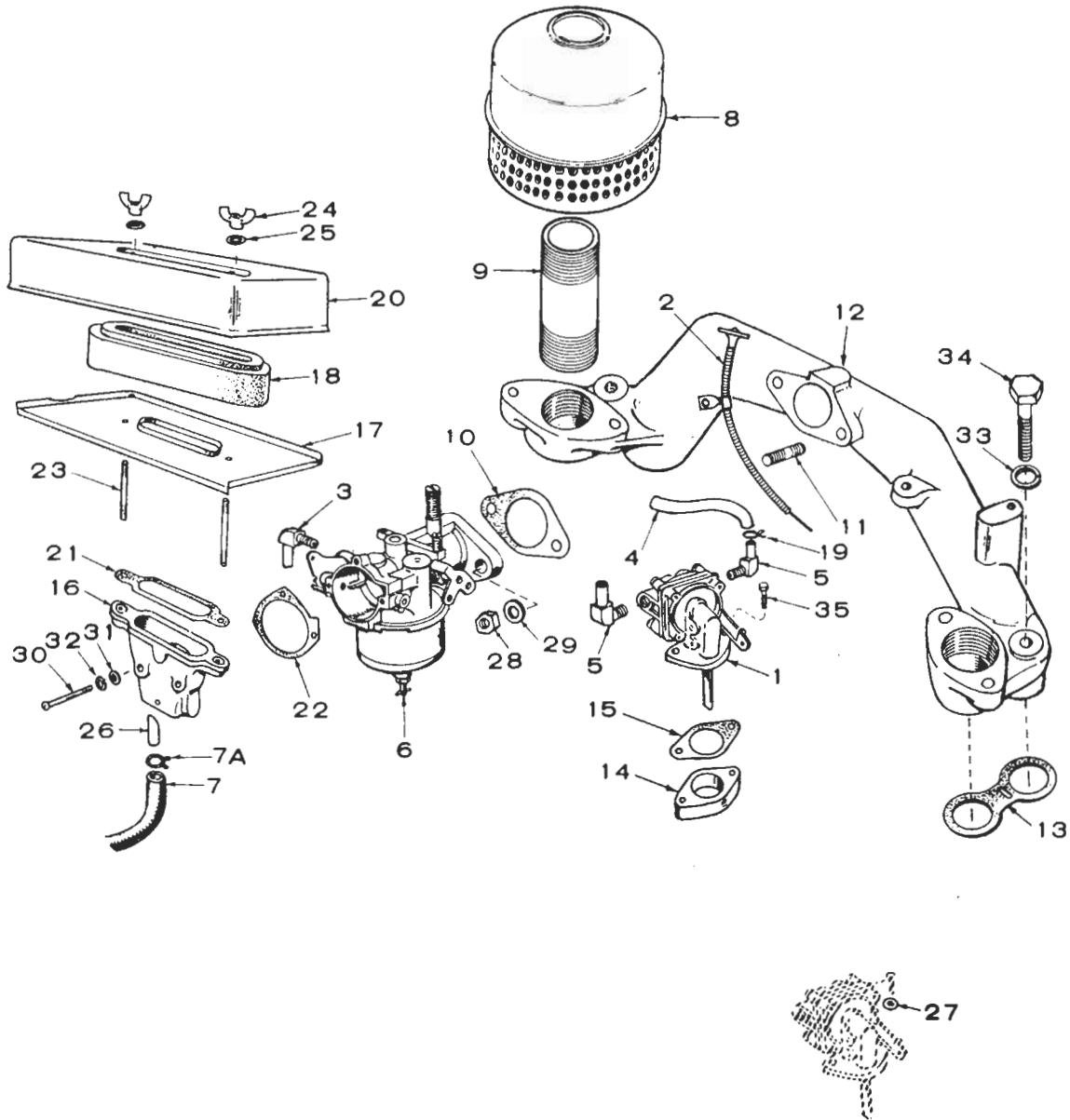


REF. NO.	PART NO.	QTY. USED	PART DESCRIPTION
1	509-0008	1	*Seal, Oil - Governor Shaft
2	510-0013	1	*Bearing, Governor Shaft Upper
3	ARM & SHAFT ASSEMBLY, GOVERNOR		
	150-1422	1	*Begin Spec J
	150-1008	1	Spec G and H
4	YOKE, GOVERNOR SHAFT		
	150-1187	1	*Begin Spec J
	150-0236	1	Spec G and H
5	518-0129	1	Ring, Yoke Retainer - Spec G and H
6	516-0130	1	*Pin, Governor Cup Stop
7	BEARING, GOVERNOR SHAFT - LOWER		
	510-0013	1	*Begin Spec J
	510-0008	1	Spec G and H
8	510-0014	1	*Ball, Bearing - Governor Shaft
9	EXTENSION, GOVERNOR ARM - STANDARD GOVERNORS ONLY		
	150-1000	1	Spec G Only
	150-1073	1	Begin Spec H

REF. NO.	PART NO.	QTY. USED	PART DESCRIPTION
10	COVER ASSEMBLY GEAR (Includes Parts Marked *)		
	103-0333	1	Spec G and H
	103-0480	1	Begin Spec J
11	103-0011	1	Gasket, Gear Cover
12	815-0181	1	Screw, Cup - Hex Head with External Lock Washer (#10-32 x 1/2" lg)
13	SCREW, CAP-HEX HEAD		
	800-0034	1	5/16-18 x 2-1/4" lg
	800-0032	4	5/16-18 x 1-3/4" lg
14	815-0046	2	*Screw, Machine - Pan Head Yoke Mounting (#8-32 x 3/8" lg) - Being Spec J
15	850-0045	5	Washer, Lock - Spring - Gear Cover Mounting (5/16")
16	509-0040	1	*Seal, Gear Cover
17	516-0011	2	Pin, Gear Cover Alignment (5/16 x 1-1/8" lg)

* - Parts Included in Gear Cover Assembly

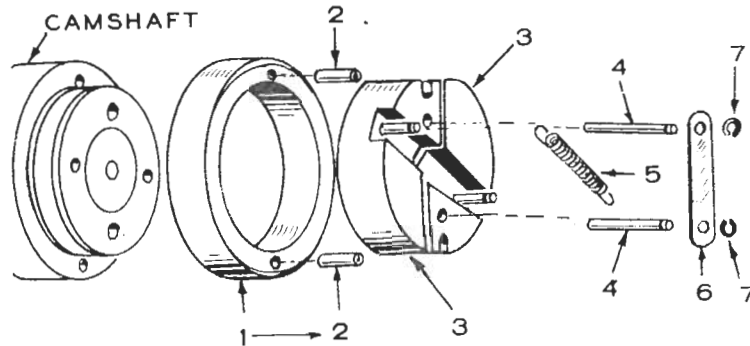
FUEL SYSTEM GROUP



FUEL SYSTEM GROUP

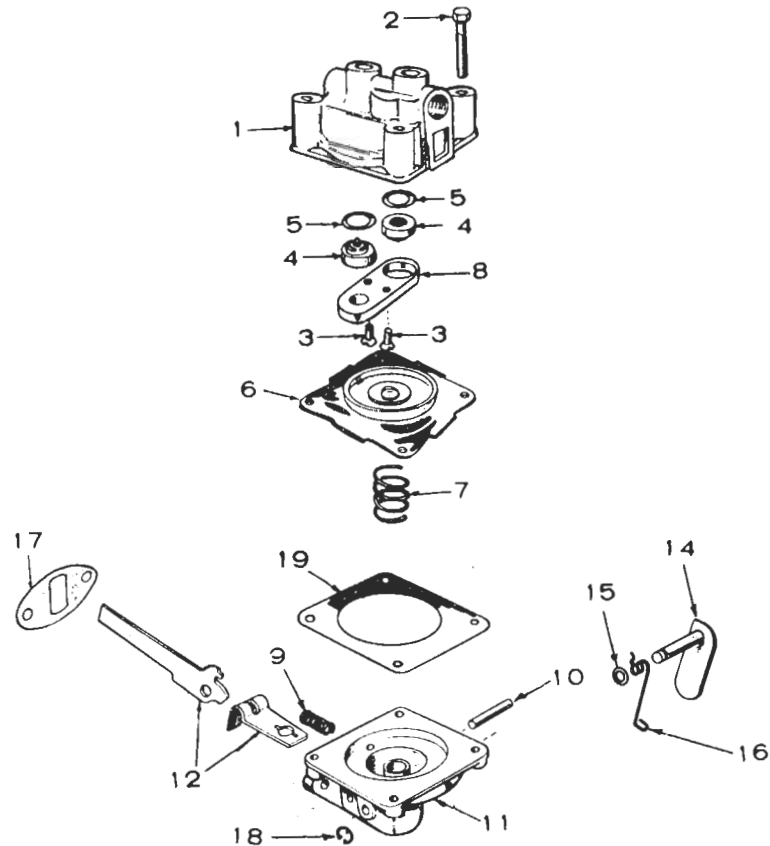
REF. NO.	PART NO.	QTY. USED	PART DESCRIPTION	REF. NO.	PART NO.	QTY. USED	PART DESCRIPTION
1	149-1393	1	Pump, Fuel (See Separate Group for Components)	17	PAN, AIR CLEANER		
2	149-1024	1	Rod, Fuel Pump Primer - Key 1	140-0828	1	Spec G Only	
3	ELBOW, CARBURETOR INLET			140-0595	1	Begin Spec H	
	503-0313	1	Begin Spec J	18	140-0636	1	Element, Air Cleaner
	502-0065	1	Spec G and H	19	503-0301	2	Clamp, Fuel Pump to Carburetor Hose
4	LINE, FUEL - PUMP TO CARBURETOR			20	140-0594	1	Cover, Air Cleaner
	149-1025	1	Spec G Only - Metal	21	140-0584	1	Gasket, Air Cleaner
	149-1097	1	Spec H Only - Metal	22	GASKET, ADAPTER TO CARBURETOR		
	503-0669	1	Begin Spec J - Rubber	140-0585	1	Spec G Only	
5	ELBOW, FUEL PUMP			140-1302	1	Begin Spec H	
	502-0313	2	Inlet and Outlet - Begin Spec J	23	520-0621	2	Stud, Air Cleaner
	502-0002	1	Outlet - Spec G and H	24	865-0020	2	Nut (1/4-20) Wing
	502-0020	1	Inlet - Spec G and H	25	526-0063	2	Washer (1/4")
6	CARBURETOR, GASOLINE (See Separate Group for Components)			26	123-0893	1	Tube, Adapter to Breather Hose
	141-0774	1	Spec G Manual Choke	27	526-0063	2	Washer, (Copper), Pump Mounting - Used on Early Models
	141-0689	1	Begin Spec H - Manual Choke	28	868-0002	2	Nut (5/16-24) - Carburetor Mounting
7	HOSE, BREATHER			29	854-0017	2	Washer, Shakeproof - Carburetor Mounting
	503-0479	1	Spec G Only	30	813-0108	2	Screw (10-32 x 1/2"), Round Head - Air Inlet to Carburetor
	503-0546	1	Begin Spec H	31	526-0241	2	Washer (#10) - Flat Air Inlet Mounting
7A	503-0170	2	Clamp, Breather Hose	32	WASHER, LOCK		
8	155-0916	2	Muffler, Exhaust	850-0030	2	Air Inlet Mounting (#10)	
9	505-0086	2	Nipple (1 x 2-1/2"), Exhaust	33	850-0050	2	Intake Manifold Mounting (3/8")
10	141-0281	1	Gasket, Carburetor Mounting	34	800-0057	2	Screw (3/8-16 x 2-3/4") - Intake Manifold Mounting
11	520-0526	2	Stud, Carburetor Mounting	35	806-0009	2	Screw, Counterbore - Fuel Pump Mounting
12	154-1161	1	Manifold, Intake				
13	154-0013	2	Gasket, Intake Manifold to Cylinder Block				
14	149-0045	2	Spacer, Fuel Pump Mounting				
15	149-0003	2	Gasket, Fuel Pump Mounting				
16	ADAPTER, AIR CLEANER						
	140-0760	1	Spec G Only				
	140-1304	1	Begin Spec H				

SPARK ADVANCE MECHANISM GROUP - KEY 1



REF. NO.	PART NO.	QTY. USED	PART DESCRIPTION	REF. NO.	PART NO.	QTY. USED	PART DESCRIPTION
1	160-0791	1	Cam, Timing Control	5	SPRING, TIMING CONTROL		
2	516-0144	4	Pin, Roll (7/16")	160-0727	1	Spec G and H	
3	WEIGHT ASSEMBLY (Includes Pins) -			160-1051	1	Begin Spec J	
	TIMING CONTROL			6	160-0726	1	Retainer, Timing Control
	160-0789	2	Magneto Ignition (Spec G and H)				(Spec G and H)
	160-1049	2	Begin Spec J	7	RING, RETAINING - TIMING CONTROL		
	160-0790	2	Battery Ignition (Spec G and H)	518-0185	2	Spec G and H	
	160-1198	2	Begin Spec J	518-0129	2	Begin Spec J	
4	PIN, GROOVE - TIMING CONTROL						
	516-0146	2	Spec G and H				
	516-0172	2	Begin Spec J				

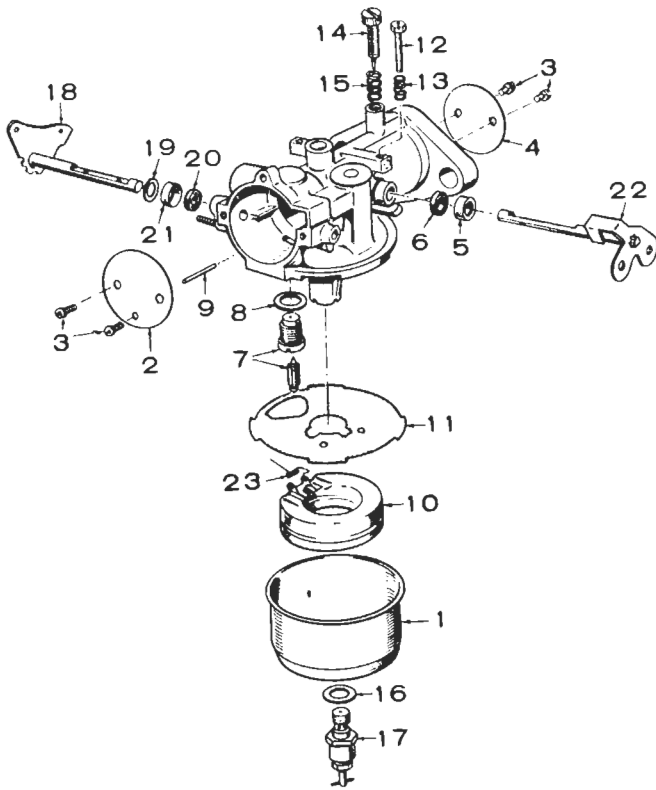
FUEL PUMP PARTS GROUP



REF. NO.	PART NO.	QTY. USED	PART DESCRIPTION	REF. NO.	PART NO.	QTY. USED	PART DESCRIPTION
	149-1393	1	Pump, Fuel (Illustrated in Fuel System Group)	10	516-0113	1	Pin, Rocker Arm
	149-0526	1	Repair Parts Kit (Includes Parts Marked *)	11		1	Body (Not Sold Separately)
1		1	Body (Not Sold Separately)	12	149-0710	1	Link and Arm, Rocker (Sold only as a set)
2	815-0148	4	Screw (#8-32 x 7/8")	14	149-1042	1	Lever, Primer
3	815-0147	2	Screw (#8-32 x 7/8") Phillips - Valve Retainer	15	509-0065	2	Seal, "O" Ring
4	149-0096	2	*Valve and Cage	16	149-1044	1	Spring, Primer Lever
5	149-0095	2	*Gasket, Valve	17	149-0003	1	*Gasket, Pump Mounting
6	149-0582	1	*Diaphragm Assembly	18	518-0129	1	Ring, Retainer - Primer Lever
7	149-0672	1	*Spring (Replaces 149-0093)	19	149-0858	1	*Gasket, Diaphragm - Lower Side
8	149-0539	1	Retainer, Valve Cage				
9	149-0675	1	*Spring (Replaces 149-0094)				

* - Parts Included in Repair Kit.

CARBURETOR PARTS GROUP - BEGIN SPEC H

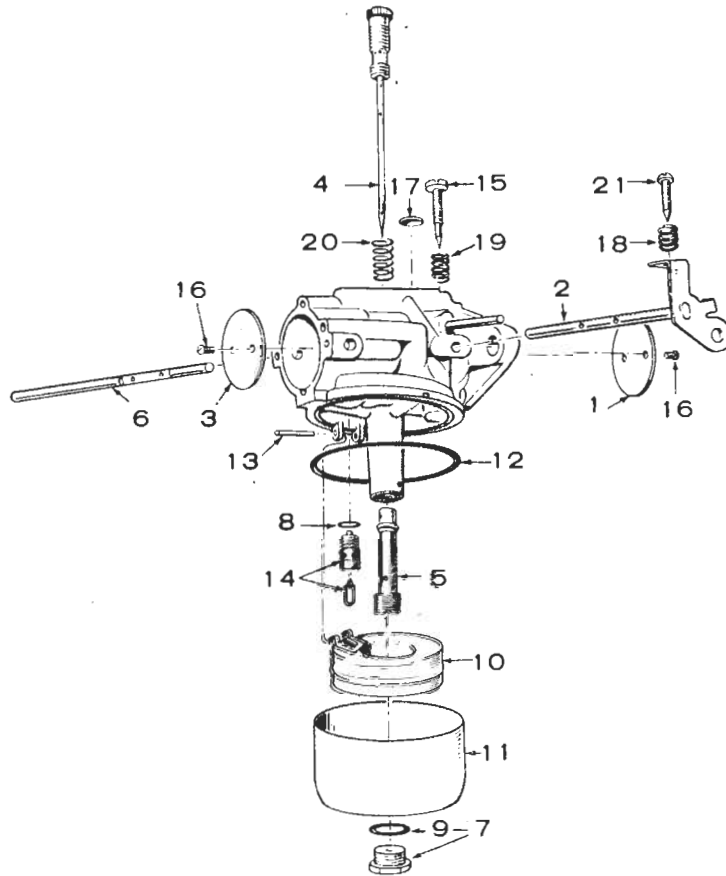


REF. NO.	PART NO.	QTY. USED	PART DESCRIPTION
CARBURETOR, GASOLINE			
	149-0689	1	Manual Choke
	141-0747	1	Repair Kit (Includes Parts Marked *)
	141-0748	1	Gasket Kit (Includes Parts Marked £)
	141-0281	1	£*Gasket, Carburetor Flange
1	141-0708	1	Bowl, Fuel
2	141-0741	1	Plate, Choke
3	141-0698	4	Screw & Washer, Choke and Throttle Plate Mounting
4	141-0706	1	Plate, Throttle
5	141-0705	1	*Retainer, Seal
6	141-0661	1	£*Seal, Rubber
7	141-0798	1	*Valve Seat Assembly, Fuel
8	141-0811	1	£Washer, Fuel Valve Seat
9	141-0703	1	*Shaft, Float
10	141-0702	1	Float Assembly

REF. NO.	PART NO.	QTY. USED	PART DESCRIPTION
11	141-0701	1	£*Gasket, Bowl to Body
12	141-0700	1	Screw, Throttle Stop
13	141-0711	1	Spring, Throttle Stop
14	NEEDLE, ADJUSTING		
	141-0713	1	Gasoline Units
15	SPRING, IDLE NEEDLE		
	141-0710	1	Gasoline
16	141-0077	1	£*Washer, Main Jet Assembly
17	141-0712	1	Jet Assembly, Main (Adjustable)
18	SHAFT, CHOKE		
	141-0742	1	Manual Choke Units
19	141-0699	1	Washer
20	141-0697	1	£*Seal, Felt
21	141-0203	1	*Retainer, Felt Seal
22	141-0709	1	Shaft and Lever, Throttle
23	141-0799	1	*Spring, Float

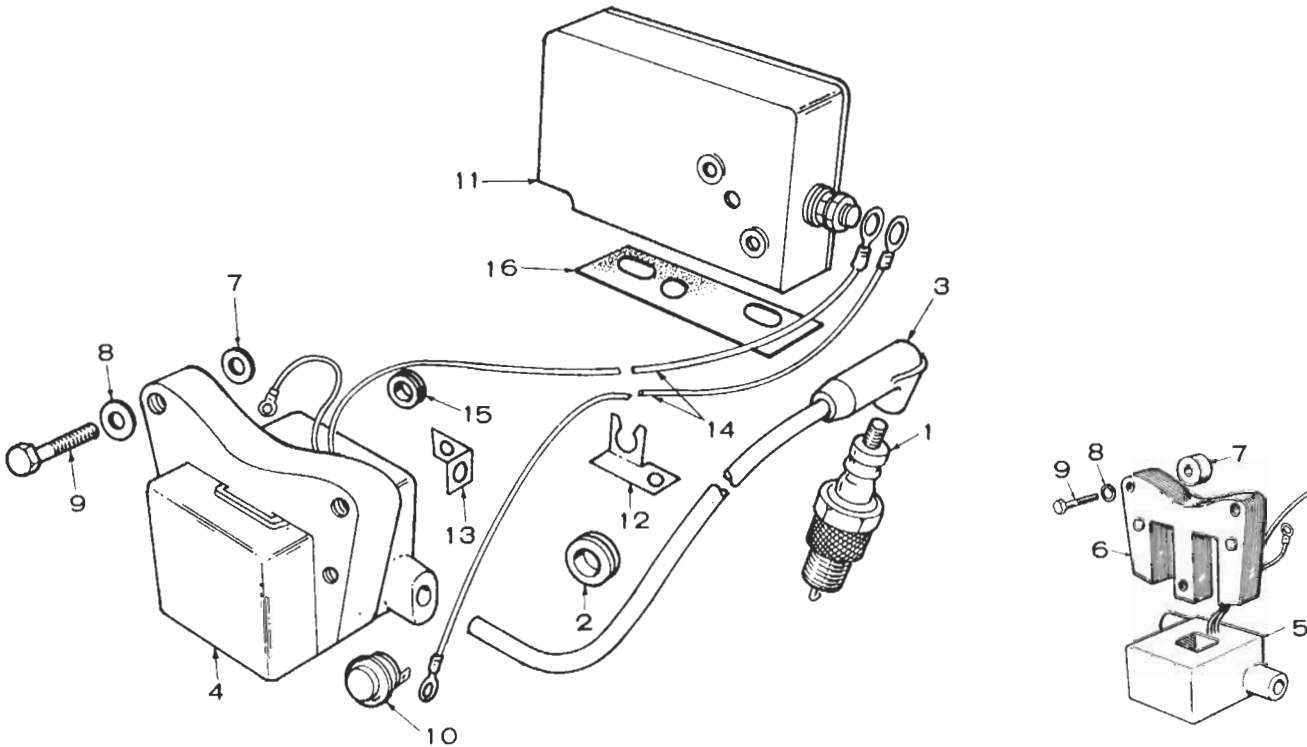
* - Parts contained in Repair Kit.
 £ - Parts contained in Gasket Kit.

CARBURETOR PARTS GROUP - SPEC G ONLY



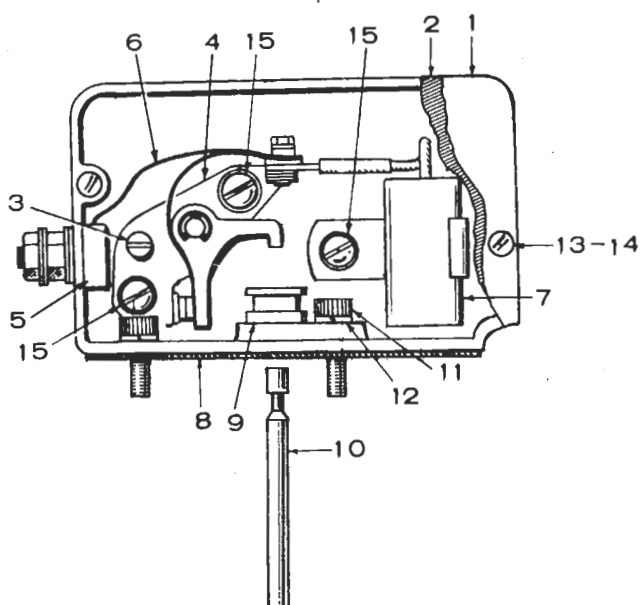
REF. NO.	PART NO.	QTY. USED	PART DESCRIPTION	REF. NO.	PART NO.	QTY. USED	PART DESCRIPTION
CARBURETOR, GASOLINE				11	143-0210	1	Bowl
	141-0774	1	Manual Choke	12	143-0077	1	*Gasket, Bowl Ring
	143-0332	1	Repair Kit (Includes Parts Marked**)	13	143-0212	1	**Pin, Float Lever
	143-0201	1	**Gasket Kit (Includes Parts Marked *)	14	143-0341	1	**Valve, Fuel Inlet
	141-0281	1	*Gasket, Carburetor Flange	15	143-0213	1	Screw, Idle Adjusting
1	143-0202	1	Valve, Throttle	16	812-0014	4	**Screw (#3-48 x 3/16") - Choke and Throttle Valve
2	143-0331	1	Shaft and Lever, Throttle	17	143-0110	1	Plug, Expansion
3	143-0220	1	Valve, Choke - Manual Choke	18	143-0214	1	Spring, Throttle Adjusting Screw
4	143-0330	1	**Needle, Idle Jet and High Speed Adjusting	19	143-0112	1	Spring, Idle Adjusting Screw
5	143-0329	1	**Nozzle	20	143-0114	1	Spring, High Speed Adjusting Needle
6	143-0221	1	Shaft and Lever, Choke	21	143-0215	1	Screw, Throttle Lever Adjusting
7	143-0208	1	Screw and Gasket, Bowl				
8	143-0015	1	*Gasket, Fuel Inlet Valve				
9	143-0209	1	*Gasket, Bowl Screw				
10	143-0297	1	Float and Lever				

MAGNETO IGNITION GROUP - KEY 1



REF. NO.	PART NO.	QTY. USED	PART DESCRIPTION	REF. NO.	PART NO.	QTY. USED	PART DESCRIPTION
1	PLUG, SPARK			6	160-0749	1	*Pole Shoe, Magneto Stator
	167-0241	2	Non-Resistor Type	7	526-0015	2	Washer, Flat (9/32" ID x 9/16" OD x 1/16" THK)
	167-0237	2	Resistor Type	8	526-0184	2	Washer, Flat (17/64" ID x 5/8" OD x #10 Gauge)
2	508-0095	2	Grommet, Rubber - Spark Plug Cables	9	815-0259	2	Screw Cap - Hex Head (1/4-20 x 1-1/4" lg)
3	CABLE, SPARK PLUG			10	313-0018	1	Switch, Stop
	167-1404	1	Right Hand - Spec G and H	11	160-0257	1	Box Assembly, Breaker (See Separate Group for Complete Breakdown)
	167-1463	1	Right Hand - Begin Spec J	12	167-0188	4	Clip, Spark Plug Cable
	167-1403	1	Left Hand - Spec G and H	13	332-0273	1	Clip, Magneto Lead
	167-1462	1	Left Hand - Begin Spec J	14	334-0028	1	Lead, (4' pieces of wire)
	167-1073	1	Right Hand - Spec G and H	15	508-0002	1	Grommet, Magneto Lead
	167-1464	1	Right Hand - Begin Spec J	16	160-0043	1	Gasket, Ignition Breaker Box Mounting
	167-1330	1	Left Hand - Spec G and H				
	167-1463	1	Left Hand - Begin Spec J				
4	160-0752	1	Stator Assembly, Magneto (Includes Parts Marked *)				
5	160-0750	1	*Coil, Magneto Stator				

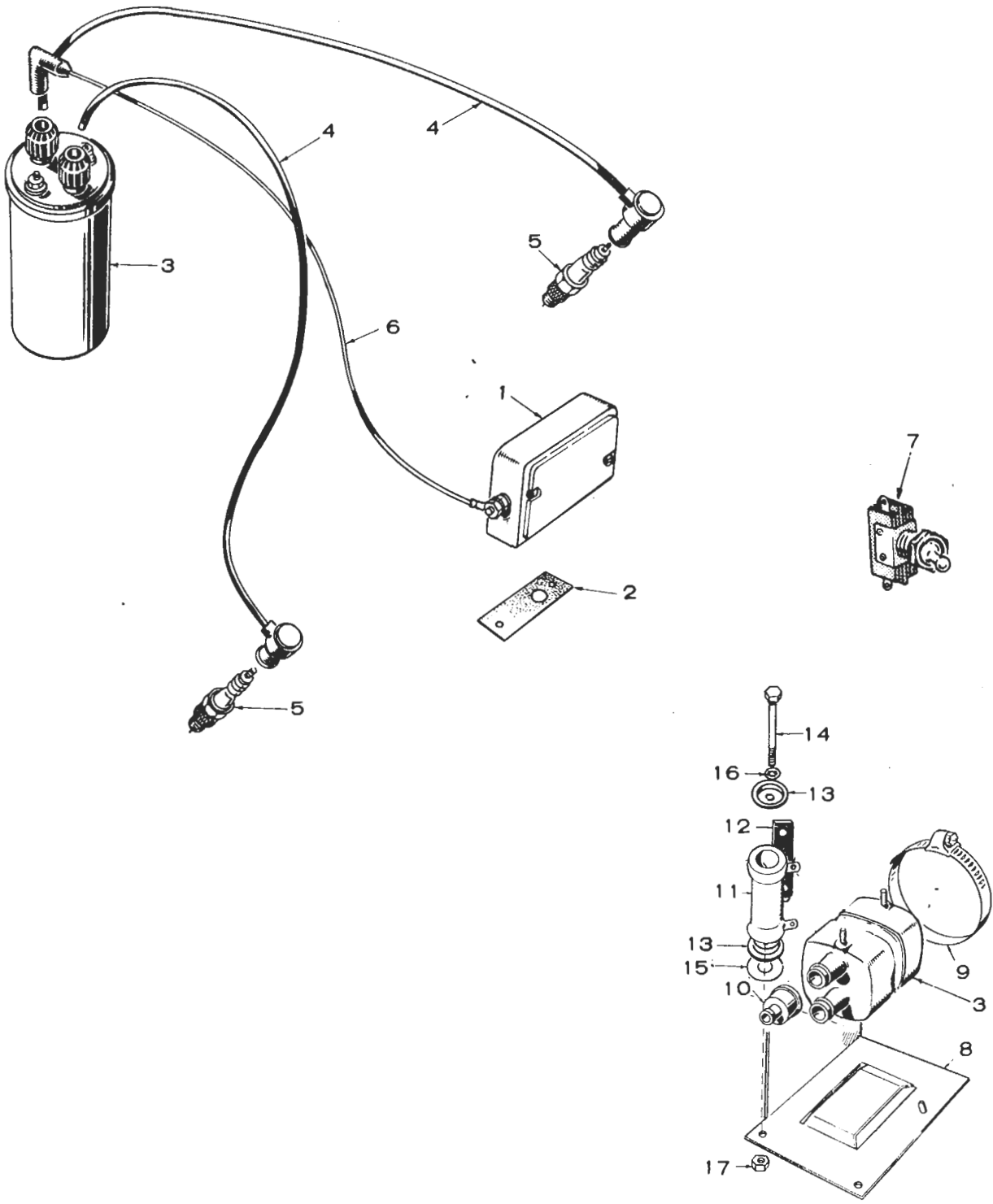
BREAKER BOX GROUP



REF. NO.	PART NO.	QTY. USED	PART DESCRIPTION	REF. NO.	PART NO.	QTY. USED	PART DESCRIPTION
	160-0257	1	Box Assembly, Breaker - Complete (Includes Mounting Gasket, Washer and Screws)	9	160-0264	1	*Guide, Plunger
1	160-0930	1	*Cover, Breaker Box	10	160-0265	1	*Plunger
2	160-0150	1	*Gasket, Breaker Box Cover	11	802-0034	2	*Screw, Cap - Socket Head (1/4-20 x 3/4" lg)
3	160-0075	1	*Cam, Breaker Point Gap Adjusting	12	850-0040	2	*Washer, Lock - Spring (1/4")
4	160-0002	1	*Point Set Breaker	13	850-0025	2	*Washer, Lock - Spring (#8)
5	160-0349	1	*Block and Terminal Assembly	14	812-0077	2	*Screw, Machine - Round Head (#8-32 x 3/8" lg)
6	160-0428	1	*Strap, Point Set to Terminal Block	15	518-0049	3	*Screw, Machine - Round Head W/ External Tooth - (#8-32 x 1/4" lg)
7	313-0069	1	*Condenser, Breaker Points				
8	160-0043	1	*Gasket, Breaker Box Mounting				

* - Parts Included in 160-0257 Breaker Box Assembly

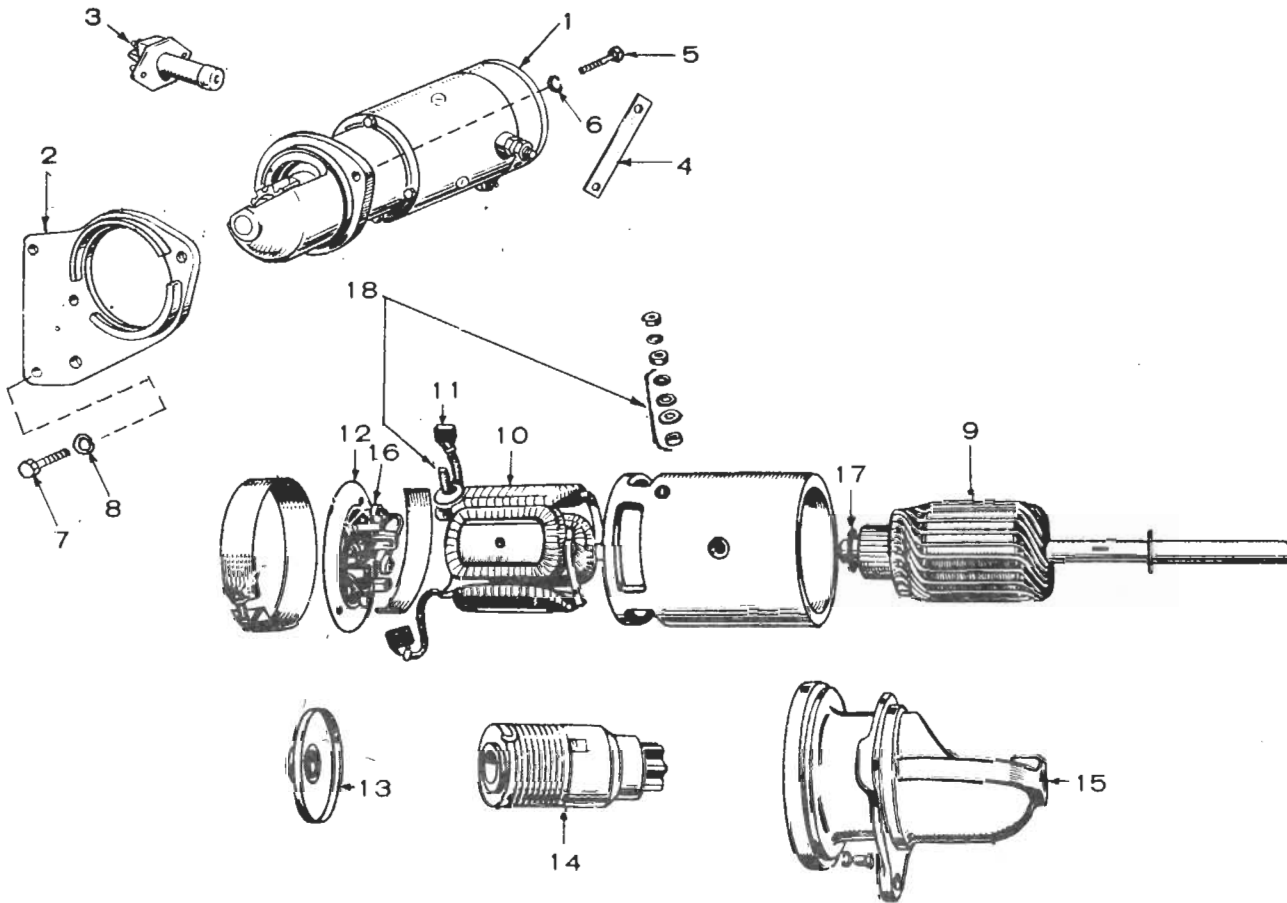
BATTERY IGNITION GROUP - KEY 2



BATTERY IGNITION GROUP - KEY 2

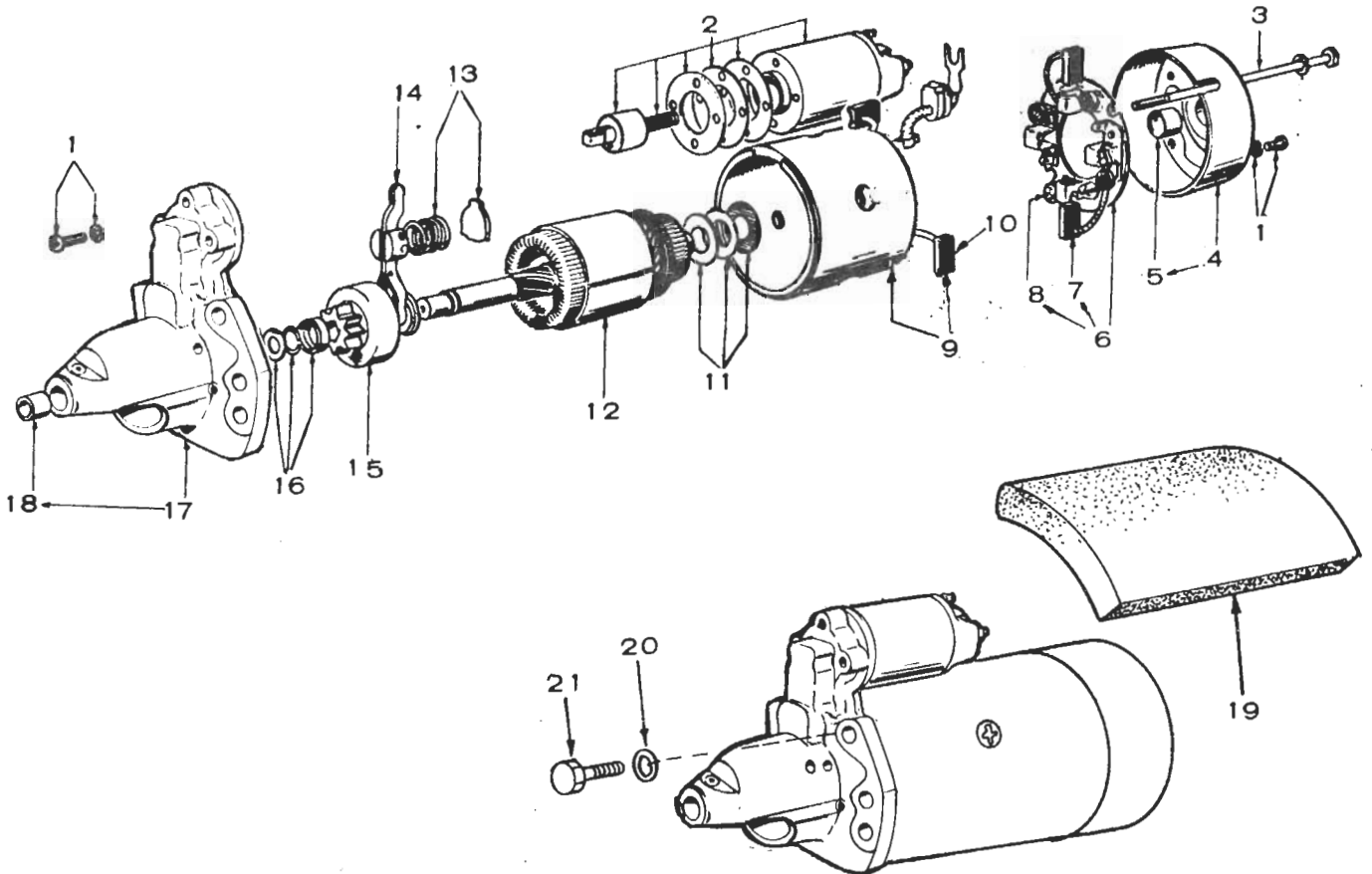
REF. NO.	PART USED	QTY. DESCRIPTION	PART	REF. NO.	PART NO.	QTY. USED	PART DESCRIPTION
1	160-0257	1	Box, Breaker - Complete (See Separate Group for Complete Breakdown of Components)	7	308-0002	1	Switch, Ignition On/Off
			Gasket, Breaker Box Mounting	8	166-0402	1	Bracket, Coil Mounting - Spec G and H
2	160-0043	1		9	503-0514	1	Clamp, Coil - Spec G and H
3	COIL, IGNITION			10	160-0558	2	Nipple, Rubber Coil - Spec G and H
	166-0346	1	Spec G and H	11	304-0060	1	Resistor, Ignition - Spec G and H
	166-0535	1	Begin Spec J	12	304-0610	1	Support, Resistor Terminal - Spec G and H
4	CABLE, SPARK PLUG			13	304-0014	2	Washer, Resistor Mounting Spec G and H
	167-1404	1	Key 1 Spec G and H R/H				Screw, Machine - Round Head Resistor Mounting Spec G and H (#10-32 x 2-1/2" lg)
	167-1073	1	Key 2 Spec G and H R/H	14	813-0112	1	Washer, Flat - Resistor Mounting (Spec G and H)
	167-1403	1	Key 1 Spec G and H L/H				(7/32" ID x 5/8" OD x 1/16" Thk)
	167-1330	1	Key 2 Spec G and H L/H	15	526-0179	1	Washer, Lock - Internal Shakeproof - Resistor Mounting Spec G and H (#10)
	167-1462	1	Key 1 Begin Spec J L/H				Nut, Hex - Resistor Mounting Spec G and H (#10-32)
	167-1463	1	Key 2 Begin Spec J L/H				
	167-1463	1	Key 1 Begin Spec J R/H				
	167-1464	1	Key 2 Begin Spec J R/H				
5	SPARK PLUG, IGNITION			16	854-0010	1	
	167-0241	2	Non-Resistor Type				
	167-0237	2	Resistor Type				
6	336-2255	1	Lead Assembly, Coil to Breaker Box - Begin Spec J	17	870-0053	1	

STARTER PARTS GROUP - SPEC G AND H



REF. NO.	PART NO.	QTY. USED	PART DESCRIPTION	REF. NO.	PART NO.	QTY. USED	PART DESCRIPTION
1	191-0511	1	Starter Motor - (Includes Parts Marked *)	9	191-0517	1	Armature
2	191-0508	1	Flange, Starter Motor Mounting	10	191-1017	1	Coil Assembly Package, Field
3	308-0028	1	Switch, Start	11	191-0513	1	Brush Set, Service
4	332-0570	1	Jumper, Starter to Switch	12	191-1018	1	Head Assembly, Commutator End
5	SCREW, CAP-HEXHEAD- STARTER MOTOR MOUNTING			13	191-1019	1	Bearing Assembly, Intermediate
	800-0049	1	3/8-16 x 7/8" lg	14	191-0271	1	Drive Assembly, Bendix
	800-0050	1	3/8-16 x 1" lg	15	191-0735	1	Bearing, Drive End
6	850-0050	2	Washer, Lock - Spring Starter Motor Mounting (3/8")	16	191-1020	1	Spring, Brush (Set of 4)
7	102-0455	3	Screw, Cap - Hex Head - Starter Motor Flange Mounting	17	191-1021	1	Washer, Armature Thrust
8	850-0050	3	Washer, Lock - Spring - Starter Motor Flange Mounting (3/8")	18	191-1022	1	Stud, Terminal (pkg.) Use as required

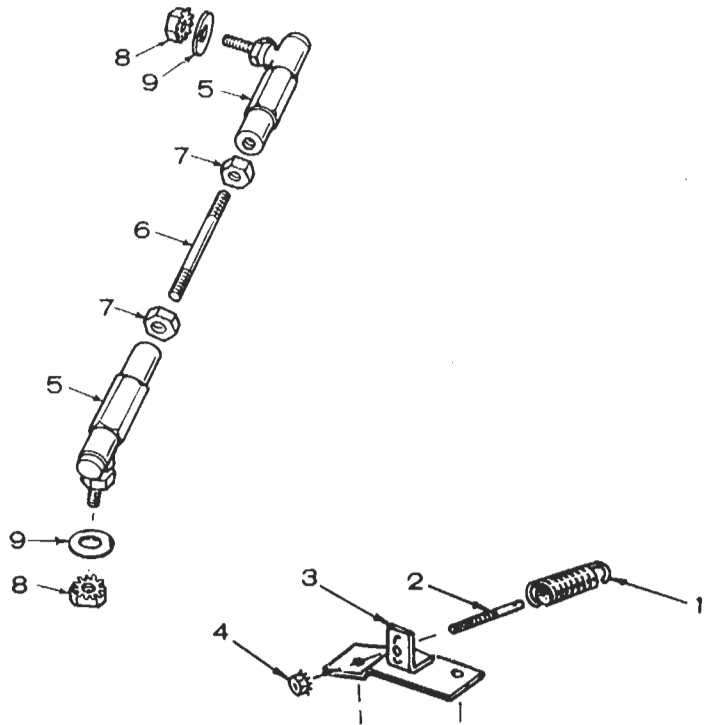
STARTER PARTS GROUP - BEGIN SPEC J



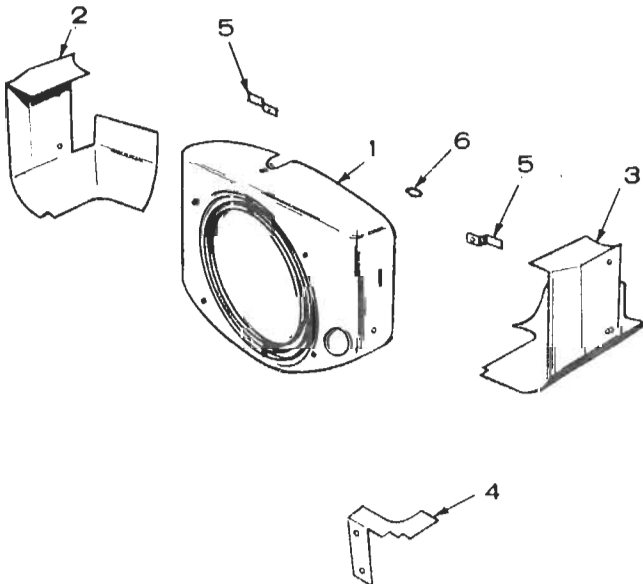
REF. NO.	PART NO.	QTY. USED	PART DESCRIPTION	REF. NO.	PART NO.	QTY. USED	PART DESCRIPTION
	191-1052	1	Starter (Includes Parts Marked *)	13	191-0984	1	*Plate & Spring Set
1	191-1011	1	*Screw & Washer Set	14	191-0983	1	*Lever, Clutch
2	191-0987	1	*Solenoid Assembly	15	191-1087	1	*Clutch & Pinion Gear
3	191-0988	2	*Bolt - Hex Washer Head	16	191-0991	1	*Stop Retaining Set - Pinion Gear
4	191-1009	1	*Bracket, Rear - Starter (Includes Rear Sleeve Bearing)	17	191-1086	1	*Bracket, Front - Starter (Includes Front Sleeve Bearing)
5	191-1010	1	*Bearing, Sleeve (Rear)	18	191-0971	1	*Bearing, Sleeve (Front)
6	191-1006	1	**Holder, Brush (Includes Negative Brush and Brush Springs)	19	191-1076	1	Seal, Air Begin Spec J
7	191-1008	1	*Brush, Starter (Negative)	20	850-0050	2	Washer, Lock - Spring - Starter Mounting
8	191-1007	3	*Spring, Helical, Compression (Brush)	21	800-0050	2	Screw, Cap - Hex Head - Starter Motor Mounting (3/8-16 x 1")
9	191-1089	1	*Yoke Assembly, (Includes Frame, Pole Shoes, Field Coil and Replaceable Positive Brushes)				
10	191-1005	2	*Brush, Starter (Positive)				# - Early Brush Holder equipped with Two (2) Negative Brushes and Four (4) Brush Springs-Completely Interchangeable with Current Brush Holder.
11	191-0997	1	*Insulating, Washer Set				* - Parts Included in 191-1052 Starter Motor
12	191-1008	1	*Armature, Starter				

GOVERNOR GROUP

REF. NO.	PART NO.	QTY. USED	PART DESCRIPTION
1	150-0098	1	Spring, Governor
2	150-1023	1	Stud, Speed Adjustment
3	150-1262	1	Bracket, Speed Stud
4	870-0131	1	Nut, Speed Adjusting
5	JOINT, BALL		
	150-0974	2	Spec G Only
	150-0939	2	Begin Spec H through Serial #540766 During Spec H - Plastic
	150-0639	2	Begin Serial #540767 During Spec H - Metal
6	LINK, THROTTLE		
	520-0187	1	Spec G and Begin Serial #540767 During Spec H
	520-0623	1	Begin Spec H through Serial #540766 During Spec H
7	870-0053	2	Palnut, Locking
8	870-0131	2	Nut, Keps - Locking Ball Joint (#10-32)
9	526-0196	2	Washer, Flat - Ball Joint (7/32" ID x 7/16" OD x 1/8" Thk)



BLOWER HOUSING GROUP



REF. NO.	PART NO.	QTY. USED	PART DESCRIPTION
1	HOUSING, BLOWER		
	134-1579	1	Key 1 Spec G and H
	134-2830	1	Begin Spec J Key 2
	134-1596	1	Spec G and H
	134-2826	1	Begin Spec J
2	134-0589	1	Housing, Cylinder Air - Left
3	HOUSING, CYLINDER AIR (Right)		
	134-0588	1	Key 1
			Key 2
	134-0674	1	Spec G and H
	134-2791	1	Begin Spec J
4	134-0670	1	Baffle, Air - Key 2 Spec G and H
5	CLIP, HOUSING - CYLINDER AIR		
	134-0599	1	Right Side
	134-2108	1	Left Side
6	508-0095	2	Grommet, Blower Housing

SERVICE KITS AND MISCELLANEOUS

NOTE: For other kits, refer to the group for the part in question.

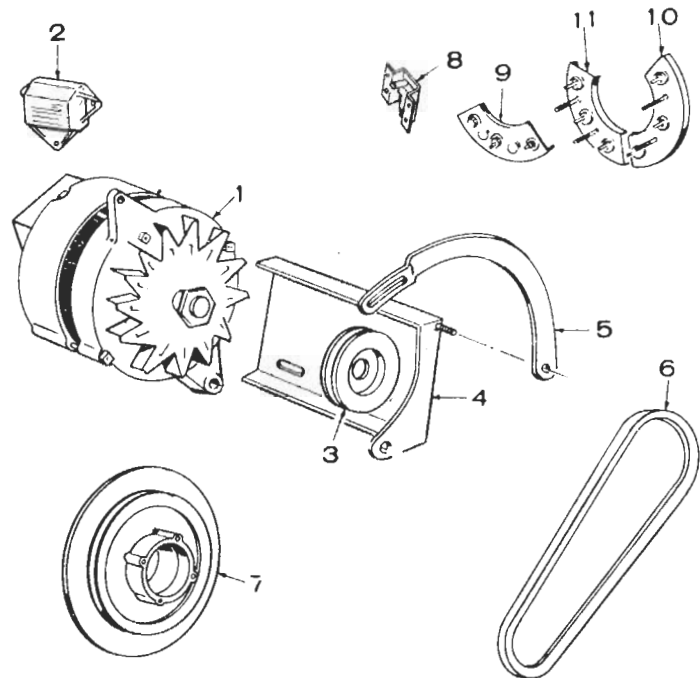
REF. NO.	PART NO.	QTY. USED	PART DESCRIPTION
	98-1100	1	Decal Kit, Set
	160-0836	1	Ignition Tune-up Kit
	168-0103	1	Gasket Kit, Complete Engine
	168-0095	1	Gasket Kit, Carbon Removal
	ENGINE OVERHAUL KIT		
	525-0225	1	Spec G Only
	522-0239	1	Begin Spec H
	TOUCH-UP PAINT (Pressurized Can)		
	525-0137	1	Metallic Green (16 oz.)
	525-0305	1	Non-Metallic Green (13 oz.)

OPTIONAL EQUIPMENT GROUPS

This section contains illustrated parts listing of factory installed options for these industrial Engines. Options may not be applicable to all models; for field conversions additional parts are usually required. Some parts listed in the standard engine parts section for parts key 1 are also applicable as optional parts for key 2. Optional parts listed in this section are in addition or in place of those shown in the standard engine parts section.

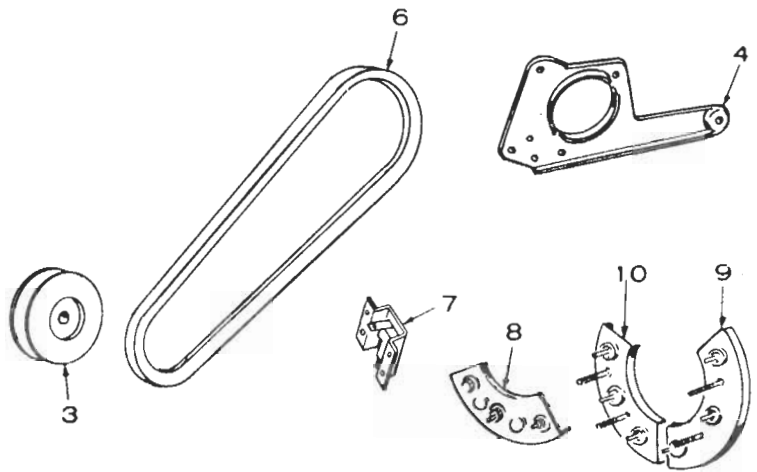
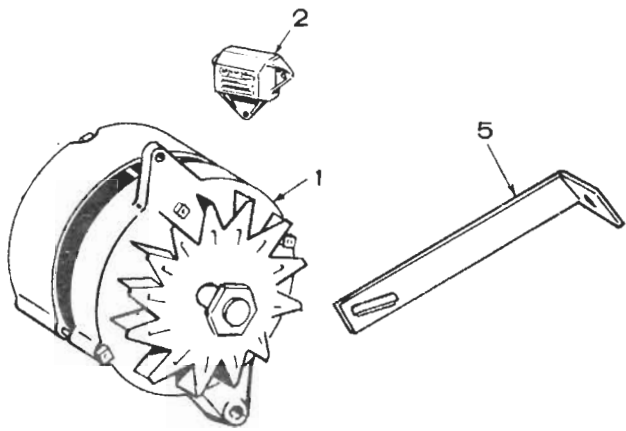
OPTIONAL GROUP 1 ALTERNATOR, AUTOMOTIVE TYPE LEFT SIDE MOUNTING

REF. NO.	PART NO.	QTY. USED	PART DESCRIPTION
1	191-0573	1	*Alternator (35 Ampere), 12 Volt) - Motorola #RA-12NON450
2	191-0574	1	*Regulator, Voltage
3	191-0623	1	Pulley, Alternator
4	BRACKET, ALTERNATOR MOUNTING		
	191-0537	1	Pressure Cooled Engine
	191-0539	1	Vacu-Flo Cooled Engine
5	191-0535	1	Bracket, Alternator Adjusting
6	511-0051	1	Belt, Drive
7	191-0134	1	Pulley, Drive - Vacu-Flo Cooled Engine
8	191-0659	1	Brush and Holder Assembly (Part of 191-0573 Alternator)
9	191-0671	1	Diode Assembly, Isolation (Part of 191-0573 Alternator)
10	191-0662	1	Diode Assembly, Rectifier - Negative (Part of 191-0573 Alternator)
11	191-0661	1	Diode Assembly, Rectifier - Positive (Part of 191-0573 Alternator)



* - For components not listed, check alternator nameplate and contact your nearest Motorola dealer.

OPTIONAL GROUP 2 ALTERNATOR, AUTOMOTIVE TYPE RIGHT SIDE MOUNTING

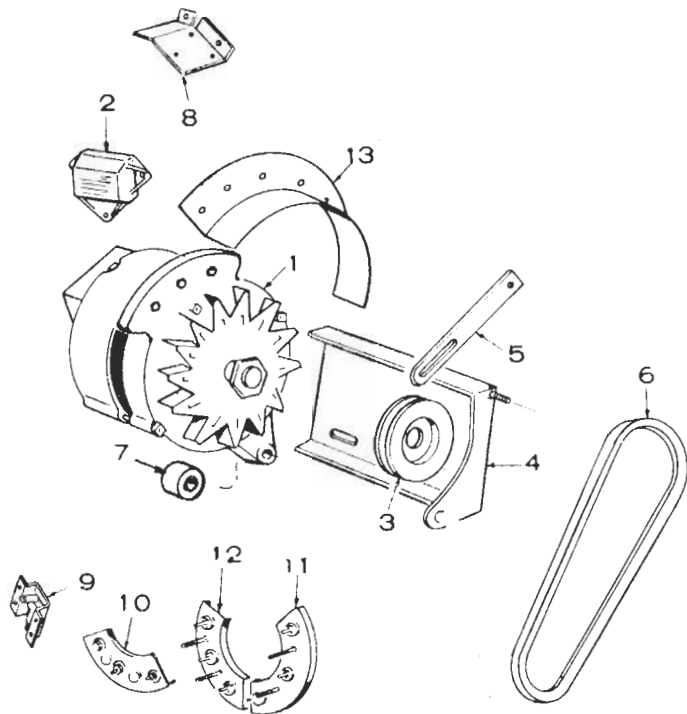


REF. NO.	PART NO.	QTY. USED	PART DESCRIPTION
1	191-0573	1	*Alternator (35 Ampere, 12 Volt) - Motorola #RA-12NON450
2	191-0574	1	*Regulator, Voltage
3	191-0623	1	Pulley, Alternator
4	191-0575	1	Bracket, Alternator and Starter Mounting
5	191-0576	1	Bracket, Alternator Adjusting
6	511-0076	1	Belt, Drive
7	191-0659	1	Brush and Holder (Part of 191-0573 Alternator)

REF. NO.	PART NO.	QTY. USED	PART DESCRIPTION
8	191-0671	1	Diode Assembly, Isolation (Part of 191-0573 Alternator)
9	191-0662	1	Diode Assembly, Rectifier - Negative (Part of 191-0573 Alternator)
10	191-0661	1	Diode Assembly, Rectifier - Positive (Part of 191-0573 Alternator)

* - For components not listed, check alternator nameplate and contact your nearest Motorola dealer.

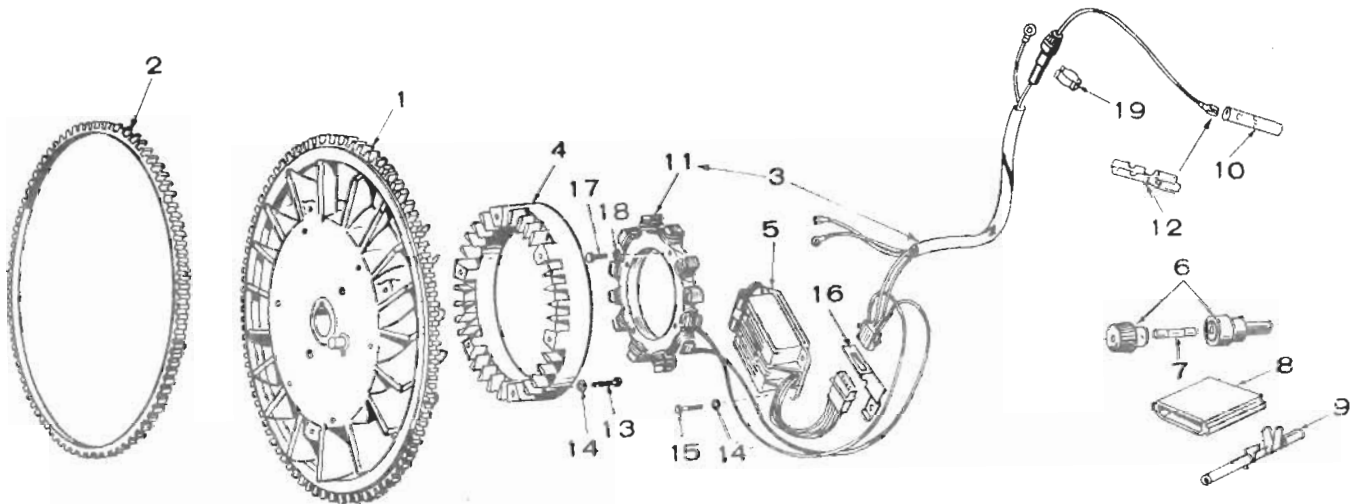
OPTIONAL GROUP 3 ALTERNATOR, AUTOMOTIVE TYPE TOP MOUNTING



REF. NO.	PART NO.	QTY. USED	PART DESCRIPTION
1	191-0543	1	*Alternator (35 Ampere, 12 Volt) - Motorola #70D44836B03
2	191-0642	1	*Regulator, Voltage
3	191-0623	1	Pulley, Alternator
4	191-0636	1	Bracket, Alternator Mounting
5	191-0637	1	Bracket, Alternator Adjusting
6	511-0067	1	Belt, Drive
7	191-0640	1	Spacer, Alternator Bracket
8	191-0638	1	Bracket, Regulator Mounting
9	191-0659	1	Brush and Holder Assembly (Part of 191-0543 Alternator)
10	191-0663	1	Diode Assembly, Isolation (Part of 191-0543 Alternator)
11	191-0662	1	Diode Assembly, Rectifier - Negative (Part of 191-0543 Alternator)
12	191-0661	1	Diode Assembly, Rectifier - Positive (Part of 191-0543 Alternator)
13	191-0725	1	Guard, Belt

* - For Components not listed, check alternator nameplate and contact your nearest Motorola dealer.

OPTIONAL GROUP 4 ALTERNATOR, FLYWHEEL (WICO)

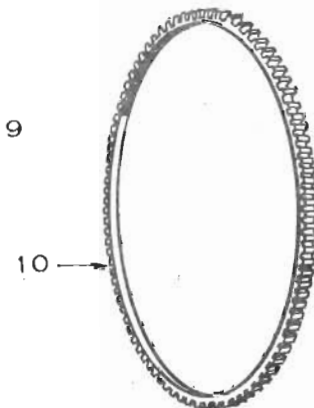
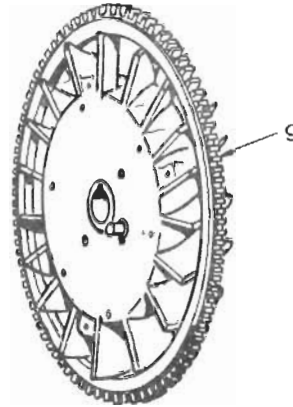
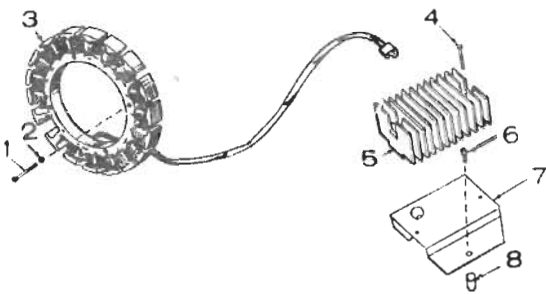


REF. NO.	PART NO.	QTY. USED	PART DESCRIPTION
1	134-1895	1	Flywheel (Includes Ring Gear)
2	134-0673	1	Gear, Ring - Flywheel
3	191-0740	1	Stator Assembly - Includes Parts Marked *)
4	191-0400	1	Rotor
5	305-0471	1	Regulator - Rectifier Assembly
6	321-0165	1	Holder Assembly, Fuse
7	321-0162	1	*Fuse - 30 Amp.
8	323-0759	1	*Connector, Socket Housing
9	323-0488	4	*Socket, Connector
10	332-0556	1	*Connector, Faston
11	191-0724	1	*Stator Only

REF. NO.	PART NO.	QTY. USED	PART DESCRIPTION
12	332-0529	1	*Terminal, Faston - Male
13	812-0156	6	Screw, Machine - Round Head (1/4-20 x 1-1/2")
14	850-0040	9	Washer, Lock - Spring (1/4")
15	800-0006	3	Screw, Cap - Hex Head (1/4-20 x 7/8")
16	332-1358	1	Bracket, Connector Mounting
17	813-0108	3	Screw, Machine - Round Head (#10-32 x 1/2")
18	850-0030	3	Washer, Lock - Spring (#10)
19	321-0169	1	Clip, Fuse Holder

927-0404 (MAY 1977)

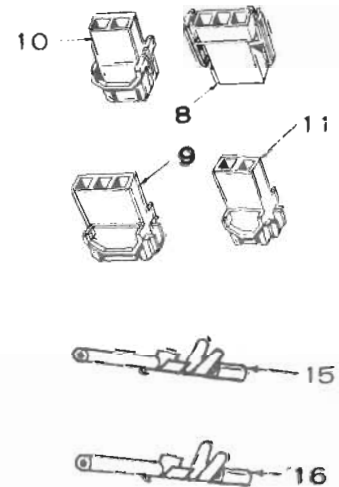
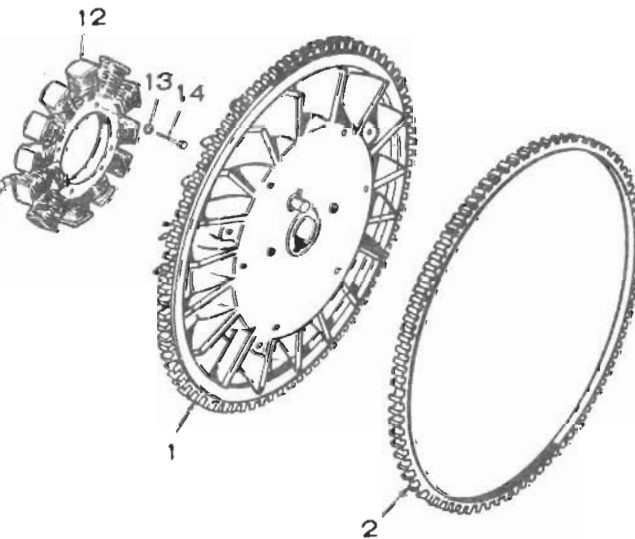
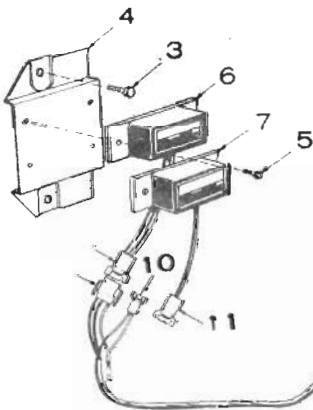
OPTIONAL GROUP 5 ALTERNATOR, FLYWHEEL (PHELON)



REF. NO.	PART NO.	QTY. USED	PART DESCRIPTION
1	813-0108	3	Screw, Machine - Round Head Cross Recessed (#10-32 x 1-1/4")
2	850-0030	3	Washer, Lock - Spring (#10)
3	191-0885	1	Stator, Alternator
4	821-0018	2	Screw, Cap -Hex Head - Self Locking (1/4-20 x 5/8")
5	191-0886	1	Regulator, Voltage

REF. NO.	PART NO.	QTY. USED	PART DESCRIPTION
6	821-0012	2	Screw, Cap - Hex Head - Self Locking (1/4-20 x 1-1/8")
7	191-1078	1	Bracket, Regulator Mounting
8	134-2100	2	Spacer, Regulator Mounting
9	134-2621	1	Flywheel (Includes Ring Gear)
10	134-0673	1	Gear, Ring - Flywheel

OPTIONAL GROUP 6 ALTERNATOR, FLYWHEEL (SYNCRO)

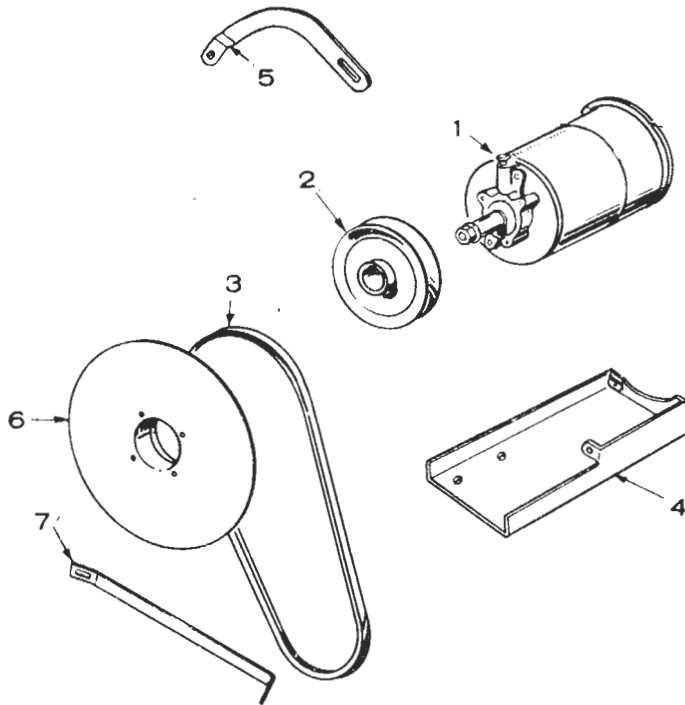


REF. NO.	PART NO.	QTY. USED	PART DESCRIPTION
1	134-2642	1	Flywheel (Includes Ring Gear)
2	134-0673	1	Gear, Ring - Flywheel
3	821-0010	2	Screw, Cap - Hex Head Locking (1/4-20 x 1/2")
4	191-1107	1	Bracket, Regulator and Rectifier Mounting
5	815-0181	4	Screw, Cap - Hex Head W/ET Lockwasher (#10-32 x 5/16")
6	191-0938	1	Rectifier, Current
7	191-0939	1	Regulator, Voltage
8	323-0882	1	Plug, Connector (3 Female Contacts)

REF. NO.	PART NO.	QTY. USED	PART DESCRIPTION
9	323-0881	1	Cap, Connector (3 Male Contacts)
10	323-0879	1	Cap, Connector (2 Male Contacts)
11	323-0880	1	Plug, Connector (2 Female Contacts)
12	191-0937	1	Stator, Alternator
13	850-0030	3	Washer, Lock - Spring (#10)
14	813-0108	3	Screw, Machine - Round Head Cross Recessed (#10-32 x 1-1/4")
15	323-0488	5	Contact, Connecting - Female
16	323-0496	5	Contact, Connecting - Male

927-0404 (MAY 1977)

OPTIONAL GROUP 7 GENERATOR - AUTOMOTIVE TYPE

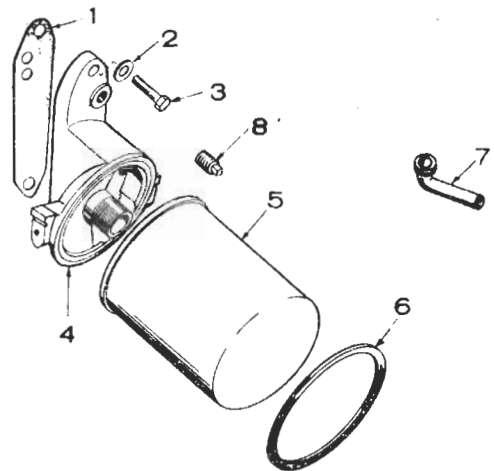


REF. NO.	PART NO.	QTY. USED	PART DESCRIPTION
1	191-0277	1	† Generator
2	191-0229	1	Pulley, Generator
3	511-0051	1	Belt, Generator Drive
4	BRACKET, GENERATOR MOUNTING		
	191-0279	1	Pressure Cooled
	191-0304	1	Vacu-flo Cooled
5	191-0280	1	Bracket, Generator Adjusting
6	191-0134	1	Pulley, Generator Drive - Vacu-flo Cooled
7	191-0305	1	Brace, Generator Mounting Bracket - Vacu flo Cooled

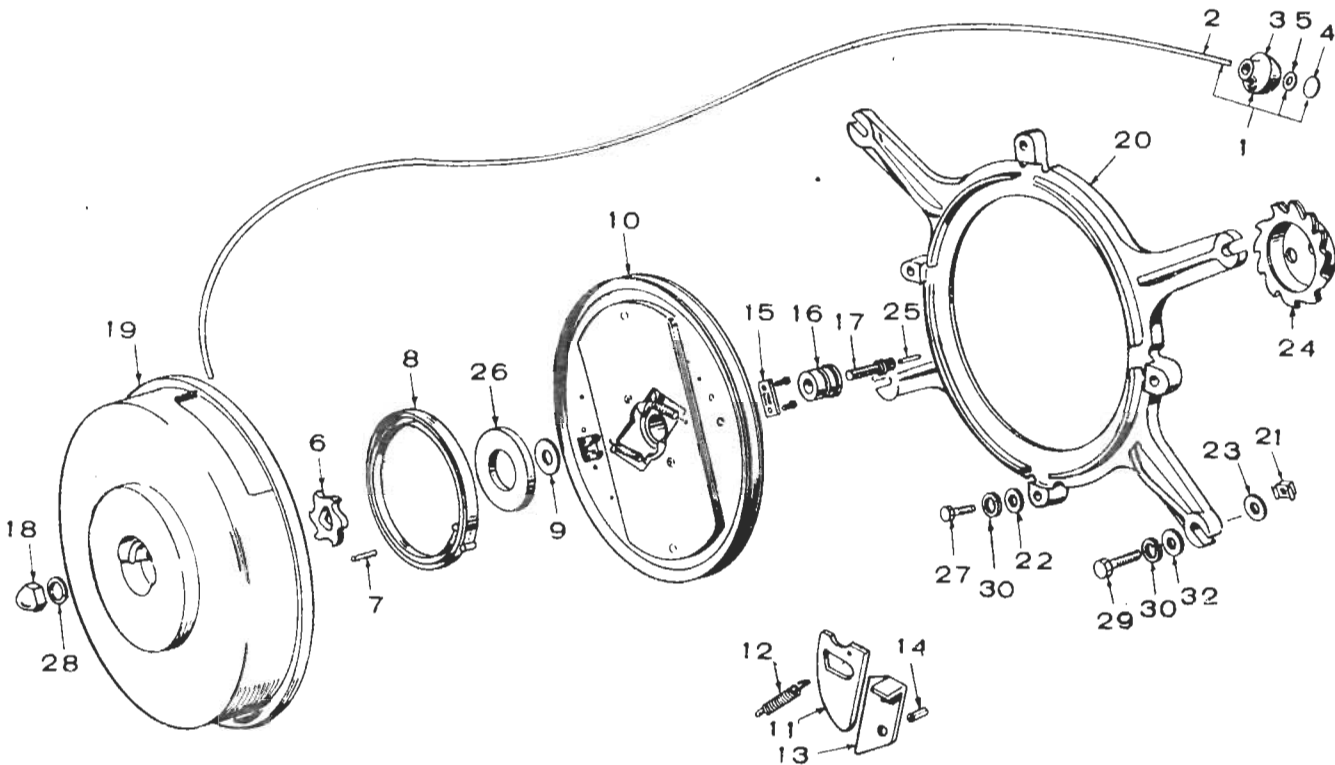
† - For components, check nameplate and contact your nearest Delco-Renly Dealer.

OPTIONAL GROUP 8 FILTER, SPIN ON

REF. NO.	PART NO.	QTY. USED	PART DESCRIPTION
1	122-0321	1	Gasket
2	526-0065	2	Washer, Flat - Copper (21/64" ID x 9/16" OD x 1/16" Thk)
3	800-0028	2	Screw, Cap - Hex Head (5/16-18 x 1")
4	122-0320	1	Adapter, Filter
5	122-0323	1	Filter, Spin-On
6	122-0347	1	Seal, Air
7	122-0345	1	Tube, Oil Drain
8	505-0057	1	Plug, Adapter Outlet (1/8")



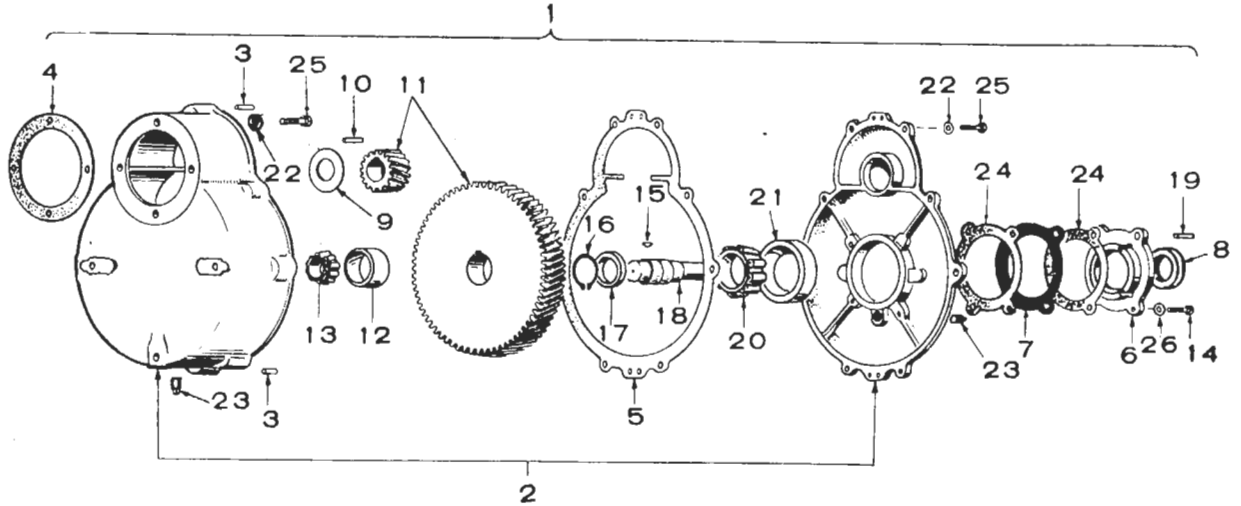
OPTIONAL GROUP 9 STARTER, REDI PULL - KEY 1



REF. NO.	PART NO.	QTY. USED	PART DESCRIPTION	REF. NO.	PART NO.	QTY. USED	PART DESCRIPTION
	KIT, STARTER-COMPLETE						
	192-0325	1	Begin Spec E (Includes Parts Marked †)	21	870-0110	4	†ΔNut, Speed Grip
	192-0215	1	Specs A through D (Includes Parts Marked Δ)	22	526-0180	4	†ΔWasher, Flat (17/16" ID x 7/8" OD x 1/8" Thk)
1	192-0045	1	†ΔRope and Grip Assembly (Includes Parts Marked □)	23	526-0130	4	†ΔWasher, Flat (17/64" ID x 1" OD x 1/16" Thk)
2	192-0043	1	†Δ□Rope	24	192-0309	1	†Wheel, Ratchet - Begin Spec E
3	192-0044	1	†Δ□Grip	25	516-0132	1	†ΔPin, Spiral - Brass
4	517-0025	1	†Δ□Plug, Grip	26	526-0168	1	†ΔWasher, Flat (1-15/32" ID x 3" OD x .047" Thk)
5	526-0021	1	†Δ□Washer, Flat (17/64" ID x 3/4" OD x 1/16" Thk)	27	815-0137	4	†ΔScrew, Cap - Hex Head (1/4-20 x 1-1/4")
6	192-0153		†ΔWheel, Cog	28	850-0050	1	†ΔWasher, Lock - Spring (3/8")
7	516-0138	1	†ΔPin, Roll	29	800-0007	4	†ΔScrew, Cap - Hex Head (1/4-20 x 1-1/4")
8	192-0039	1	†ΔSpring, Recoil	30	850-0040	8	†ΔWasher, Lock - Spring (1/4")
9	526-0123	1	†ΔWasher, Thrust	31	815-0137	2	†ΔScrew, Cap - Hex Head (1/4-20 x 1-1/4")
10	192-0180	1	†ΔSheave, Rope (Includes Parts Marked *)	32	526-0158	4	†ΔWasher, Flat (.261" ID x 1" OD x 1/8" Thk)
11	192-0172	2	†Δ*Pawl	33	526-0015	2	†ΔWasher, Flat (9/32" ID x 9/16" OD x 1/16" Thk)
12	192-0165	2	†Δ*Spring, Pawl	34	192-0170	1	ΔWheel, Ratchet - Specs A through D
13	192-0168	2	†Δ*Arm, Ratchet	35	192-0218	2	ΔScrew, Cap - Hex Head - Specs A through D
14	516-0110	4	†Δ*Pin, Roll (2) Pawl (2) Ratchet Arm				
15	192-0167		†Δ*Clamp, Rope				
16	192-0163	1	†ΔBearing, Sheave Hub				
17	192-0323	1	†ΔScrew, Cap - Socket Head (3/8-16 x 1-1/2")				
18	862-0003	1	†ΔNut, Hex (3/8-16)				
19	192-0152	1	†ΔCover, Starter				
20	192-0186	1	†ΔRing, Mounting				

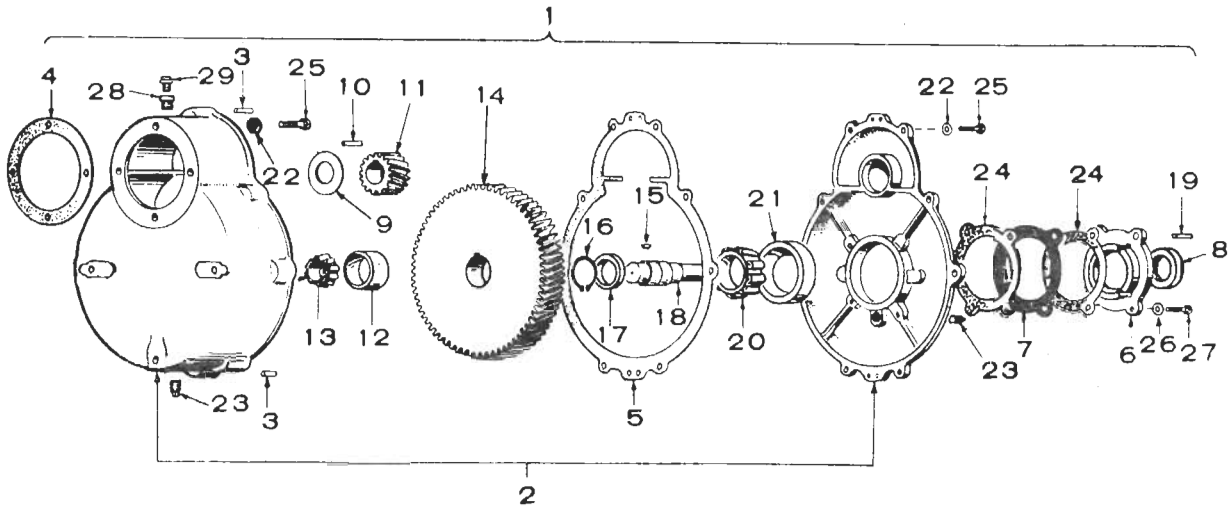
† - Parts Included in 192-0325 Starter Kit.
 Δ - Parts Included in 192-0215 Starter Kit.
 □ - Parts Included in 192-0045 Rope and Grip Assembly
 * - Parts Included in 192-0180 Rope Sheave.

OPTIONAL GROUP 10 GEAR REDUCTION - 3.3:1



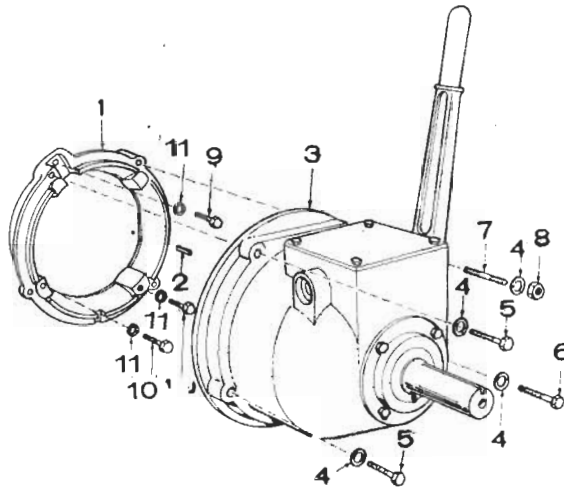
REF. NO.	PART NO.	QTY. USED	PART DESCRIPTION	REF. NO.	PART NO.	QTY. USED	PART DESCRIPTION
1	REDUCTION GEAR ASSEMBLY			14	800-0007	4	Screw, Cap - Hex Head (1/4-20 x 1")
	190-0444	1	Mounted Left Side Horizontal	15	515-0159	1	Key, Driven Gear
	190-0440	1	Mounted Right Side Horizontal	16	518-0013	1	Ring, Retainer
2	190-0050	1	Housing - Includes Cover (Also Order 2 #516-0012 Pins)	17	190-0202	1	Spacer, Bearing
3	516-0012	2	Pin, Dowel	18	190-0102	1	Shaft, Take-Off
4	190-0020	1	Gasket, Housing to Engine	19	515-0103	1	Key, Take-Off Shaft
5	190-0021	1	Gasket, Cover to Housing	20	510-0023	1	Cone, Roller Bearing
6	190-0016	1	Plate, Bearing Retainer	21	510-0024	1	Cup, Roller Bearing
7	190-0115	1	Shim Set, End Play Adjustment	22	850-0045	12	Washer, Lock - Spring (5/16")
8	509-0016	1	Seal, Oil	23	505-0054	3	Plug, Pipe (1/4)
9	190-0195	1	Washer, Pinion Gear	24	190-0306	2	Gasket, Bearing Plate to Housing
10	515-0142	1	Key, Pinion Gear	25	800-0028	16	Screw, Cap - Hex Head (5/16-18 x 1")
11	190-0447	1	Gear, Set (Pinion and Driven)	26	526-0063	4	Washer, Flat - Copper (17/64" ID x 7/16" OD x 1/22" Thk)
12	510-0022	1	Cup, Roller Bearing				
13	510-0021	1	Cone, Roller Bearing				

OPTIONAL GROUP 11 GEAR REDUCTION - 4:1



REF. NO.	PART NO.	QTY. USED	PART DESCRIPTION	REF. NO.	PART NO.	QTY. USED	PART DESCRIPTION
1	REDUCTION GEAR ASSEMBLY			18	190-0192	1	Shaft, Take-Off
	190-0193	1	Mounted Left Side Horizontal	19	515-0103	1	Key, Take-Off Shaft
	190-0299	1	Mounted Right Side Horizontal	20	510-0023	1	Cone, Roller Bearing
	190-0410	1	Mounted Vertical Down	21	510-0024	1	Cup, Roller Bearing
2	190-0050	1	Housing - Includes Cover (Also Order 2 #516-0012 Pins)	22	850-0045	12	Washer, Lock - Spring (5/16")
3	516-0012	2	Pin, Dowel	23	PLUG, PIPE (1/4) 505-0054	3	Mounted Left Side and Mounted Right Side Gear Box
4	190-0020	1	Gasket, Housing to Engine		505-0054	2	Mounted Vertical Down Gear Box
5	190-0021	1	Gasket, Cover to Housing	24	190-0306	2	Gasket, Bearing Plate to Housing
6	190-0016	1	Plate, Bearing Retainer	25	800-0028	16	Screw, Cap - Hex Head (5/16-18 x 1")
7	190-0115	1	Shim Set, End Play Adjustment	26	526-0063	4	Washer, Flat - Copper (17/64" ID x 7/16" OD x1/32" Thk)
8	516-0016	1	Seal, Oil	27	800-0007	4	Screw, Cap - Hex Head (1/4-20 x 1")
9	190-0195	1	Washer, Pinion Gear	28	505-0007	1	Bushing, Reducer - Mounted Vertical Down Gear Box
10	515-0142	1	Key, Pinion Gear	29	518-0172	1	Vent, Mounted Vertical Down Gear Box
11	190-0191	1	Gear, Pinion				
12	510-0022	1	Cup, Roller Bearing				
13	510-0021	1	Cone, Roller Bearing				
14	190-0190	1	Gear, Driven				
15	515-0159	1	Key, Driven Gear				
16	518-0013	1	Ring, Retainer				
17	190-0202	1	Spacer, Bearing				

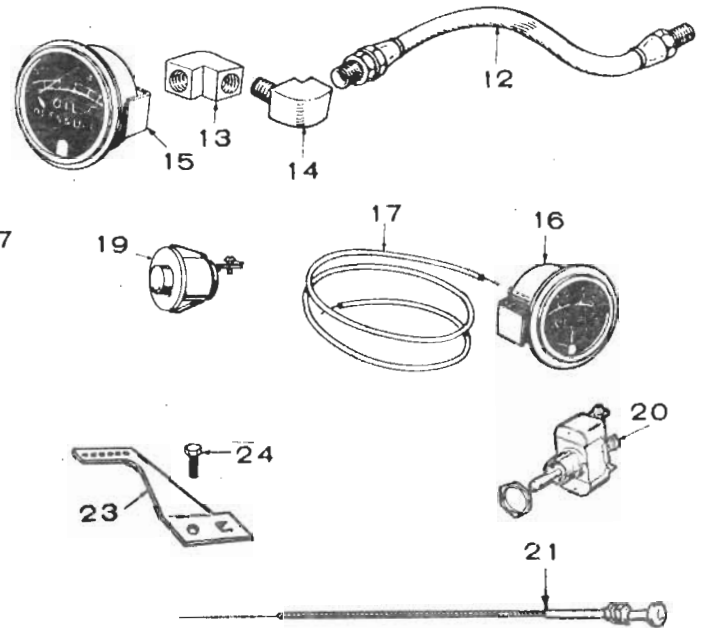
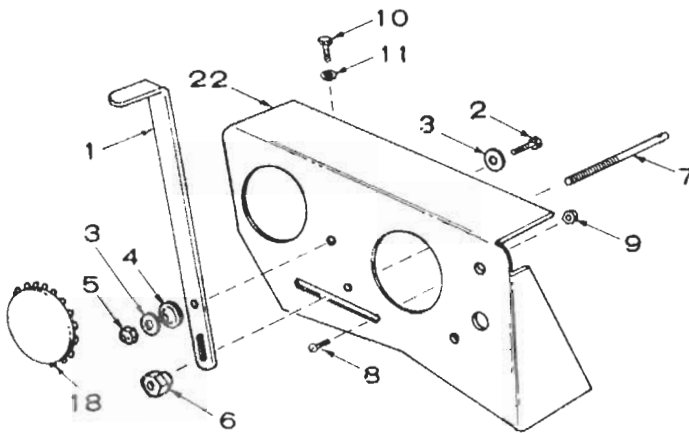
OPTIONAL GROUP 12 CLUTCH



REF. NO.	PART NO.	QTY. USED	PART DESCRIPTION
	190-0178	1	Kit, Clutch - Complete
1	190-0171	1	Adapter, Clutch to Engine
2	515-0041	1	Key, Clutch
3	190-0174	1	*Clutch Assembly
4	850-0055	3	Washer, Lock - Spring (7/16")
5	800-0074	1	Screw, Cap - Hex Head (7/16-14 x 1-3/4")
6	800-0075	2	Screw, Cap - Hex Head (7/16-14 x 2")
7	520-0126	1	Stud (3/8 x 3-7/8")
8	867-0003	1	Nut, Hex (3/8-24)
9	800-0053	1	Screw, Cap - Hex Head (3/8-16 x 1-3/4")
10	800-0054	2	Screw, Cap - Hex Head (3/8-16 x 2")
11	850-0050	4	Washer, Lock - Spring (3/8")

* - For components, check Clutch nameplate and contact your nearest clutch dealer.

OPTIONAL GROUP 13 CONTROL, TOP MOUNTED

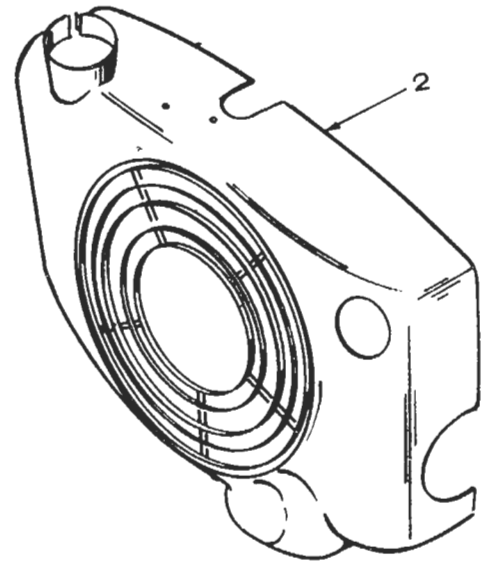
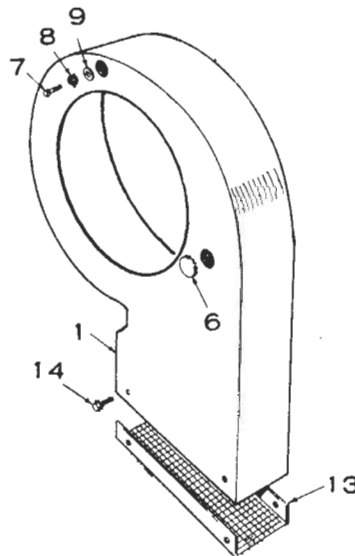
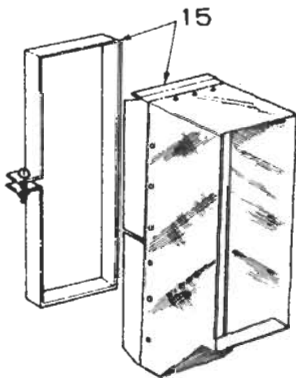
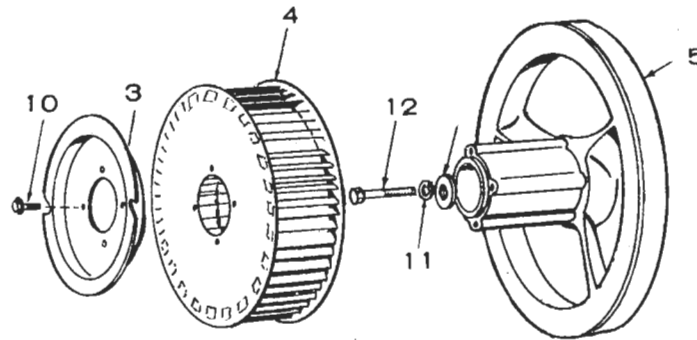


REF. NO.	PART NO.	QTY. USED	PART DESCRIPTION
1	152-0170	1	Lever, Throttle Control
2	800-0005	1	Screw, Cap - Hex Head (1/4-20 x 3/4")
3	526-0015	2	Washer, Flat (9/32" ID x 9/16" OD x 1/16" Thk)
4	152-0041	1	Washer, Tension
5	870-0065	1	Nut, Hex Self Locking (1/4-20)
6	150-0621	1	Nut, Special - Speed Adjusting Stud
7	150-0090	1	Stud, Speed Adjusting
8	815-0199	2	Screw, Machine - Fillister Head (#10-32 x 5/16")
9	870-0131	2	Nut, Hex with ET Lock Washer (10-32)
10	800-0002	2	Screw, Cap - Hex Head (1/4-20 x 3/8")

REF. NO.	PART NO.	QTY. USED	PART DESCRIPTION
11	850-0040	2	Washer, Lock - Spring (1/4")
12	501-0004	1	Line, Oil
13	502-0055	1	Elbow, Pipe
14	502-0002	1	Elbow, Inverted Male
15	193-0005	1	Gauge, Oil Pressure
16	302-0060	1	Ammeter (20-0-20)
17	334-0028	1	Lead (4 foot pieces of wire)
18	517-0009	1	Plug, Dot Button
19	308-0029	1	Switch, Start
20	308-0232	1	Switch, Stop
21	153-0328	1	Cable, Choke
22	301-2780	1	Bracket, Engine Control
23	150-1000	1	Extension, Governor Arm
24	815-0181	1	Screw, Cap - Hex Head W/ET (#10-32 x 1/2")

927-9404 (MAY 1977)

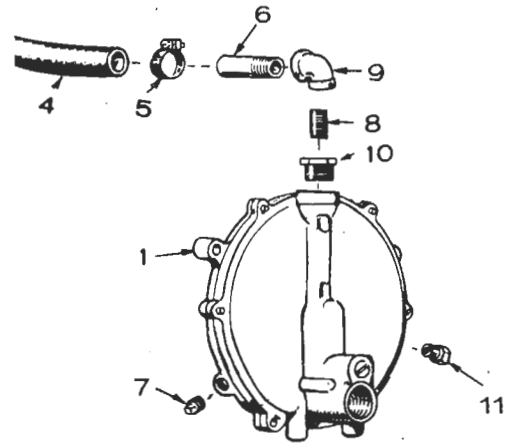
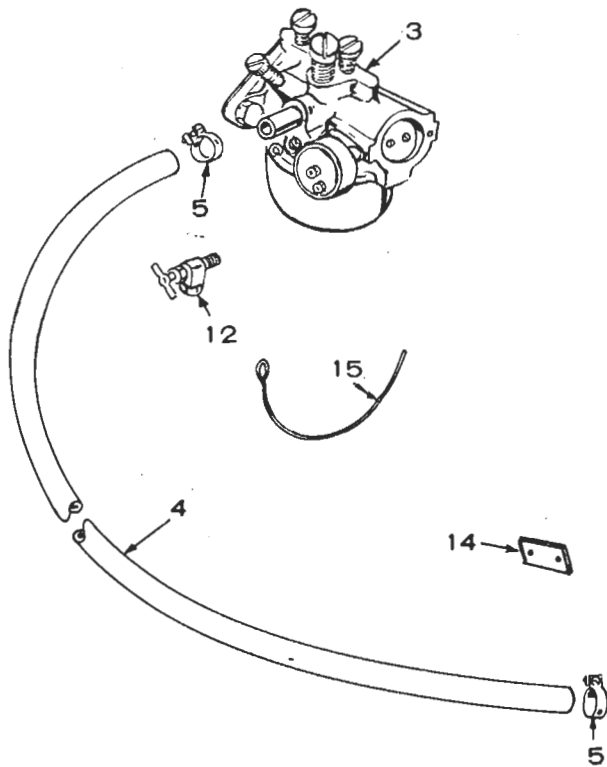
OPTIONAL GROUP 14 VACU FLO COOLING AND FLYWHEEL



REF. NO.	PART NO.	QTY. USED	PART DESCRIPTION	REF. NO.	PART NO.	QTY. USED	PART DESCRIPTION
1	SCROLL, AIR DISCHARGE			8	853-0013	4	Washer, Lock - ET (1/4")
	134-1727	1	Mounted in 6 O'clock position	9	526-0015	4	Washer, Flat (9/32" ID x 9/16" OD x 1/16" Thk)
	134-1725	1	Mounted in 9 O'clock position	10	800-0010	4	Screw, Cap - Hex Head (1/4-20 x 1-3/4")
	134-0564	1	Mounted in 3 O'clock or 12 O'clock position	11	850-0040	4	Washer, Lock - Spring (1/4")
2	HOUSING, BLOWER			12	104-0170	1	Screw, Cap - Hex Head (Special) - Flywheel Mounting
	134-2828	1	Begin Spec J	13	134-2956	1	Guard, Scroll Outlet
	134-2138	1	Spec G and H	14	815-0421	4	Screw, Machine - Hex Head (#10-16 x 1/2")
3	192-0272	1	Sheave, Rope	15	405-1059	1	Anti-Vibration Package
4	134-0565	1	Wheel, Blower				
5	FLYWHEEL						
	104-0302	1	Standard				
	104-0491	1	Engine with Optional Spark Advance				
6	517-0021	2	Plug, Dot Button				
7	800-0002	4	Screw, Cap - Hex Head (1/4-20 x 3/8")				

* - Vacu-flo units with oil filter also see Oil Filter Group - Option 22

OPTIONAL GROUP 15 FUEL SYSTEM - GAS - GASOLINE



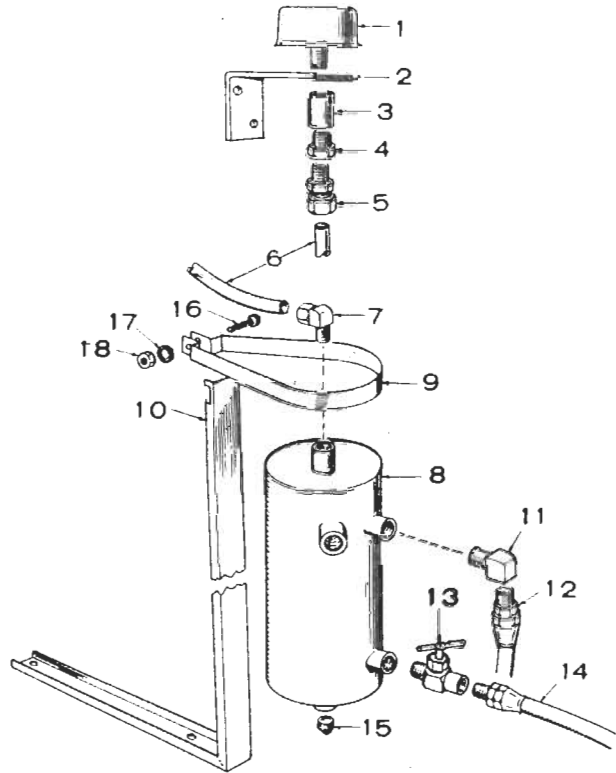
REF. NO.	PART NO.	QTY. USED	PART DESCRIPTION
	148-0390	1	Repair Kit, Gas Regulator
1	148-0311	1	Regulator, Gas (Garretson Manufacturer)
3	*CARBURETOR, GAS-GASOLINE		
	143-0338	1	Spec G Only (Manual Choke)
	141-0721	1	Begin Spec H (Manual Choke)
	143-0339	1	Spec G Only (Electric Choke)
	142-0722	1	Begin Spec H (Electric Choke)
3	*CARBURETOR, GAS		
	143-0340	1	Spec G Only
	141-0744	1	Begin Spec H
4	503-0315	1	Hose, Regulator to Carburetor
5	503-0032	2	Clamp, Hose
6	505-0302	1	Nipple (1/4 x 1-1/2"), Half
7	505-0057	1	Plug (1/8") - Regulator

REF. NO.	PART NO.	QTY. USED	PART DESCRIPTION
8	505-0099	1	Nipple (1/4 x 7/8") - Regulator Outlet
9	505-0038	1	Elbow (1/4") - Regulator Outlet
10	505-0017	1	Bushing (3/8 x 1/4") - Regulator Outlet
11	148-0107	1	Vent, Regulator
12	504-0007	1	Valve, Shut-Off - Fuel Pump Inlet
14	149-0136	1	Plate, Fuel Pump Hole Crankcase (Gas Fuel Sets)
15	143-0231	1	Wire, Choke Stop (Gas-Gasoline Units)

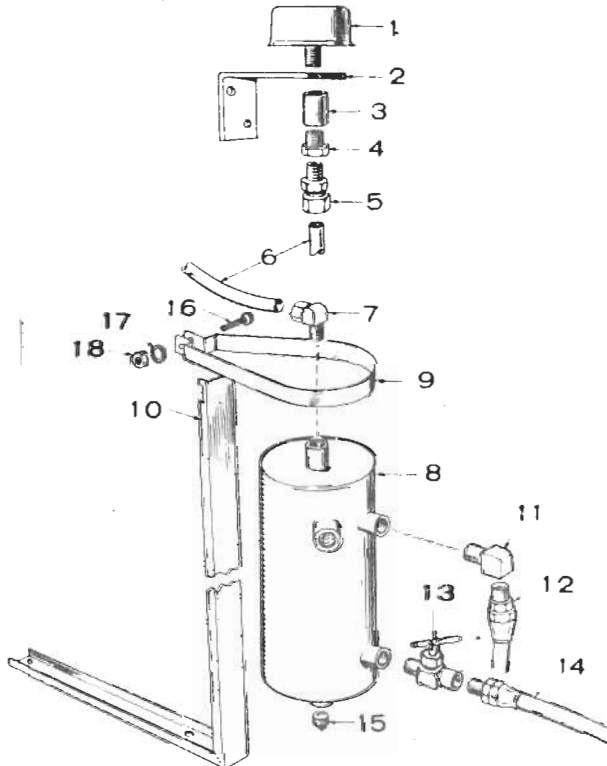
* - See Separate group for components and Gasket Kit.

OPTIONAL GROUP 16 RESERVOIR (DAY) TANK 1 QUART

REF. NO.	PART NO.	QTY. USED	PART DESCRIPTION
	159-0591	1	Kit, Tank (Includes all parts in this group)
1	159-0041	1	Cap, Vent
2	415-0055	1	Bracket, Vent Cap
3	505-0028	1	Coupling, Pipe
4	505-Q016	1	Bushing, Reducer (3/8 to 1/8")
5	502-0116	1	Connector, Compression
6	159-0345	1	Tubing, Copper (5/16 x 12")
7	502-0024	1	Elbow, Compression (90°)
8	159-0294	1	Tank, Reservoir
9	159-0556	1	Band, Reservoir Tank
10	159-0612	1	Bracket, Reservoir Tank Mounting
11	502-0020	1	Elbow, Street (90°)
12	501-0005	1	Line, Fuel - to Fuel Pump (18")
13	504-0086	1	Valve, Shut-off
14	501-0007	1	Line, Fuel - to Carburetor (24")
15	505-0057	1	Plug, Tank Drain
16	812-0156	1	Screw, Machine - Round Head (1/4-20 x 1-1/2")
17	850-0040	1	Washer, Lock - Spring (1/4")
18	861-0011	1	Nut, Square (1/4-20)

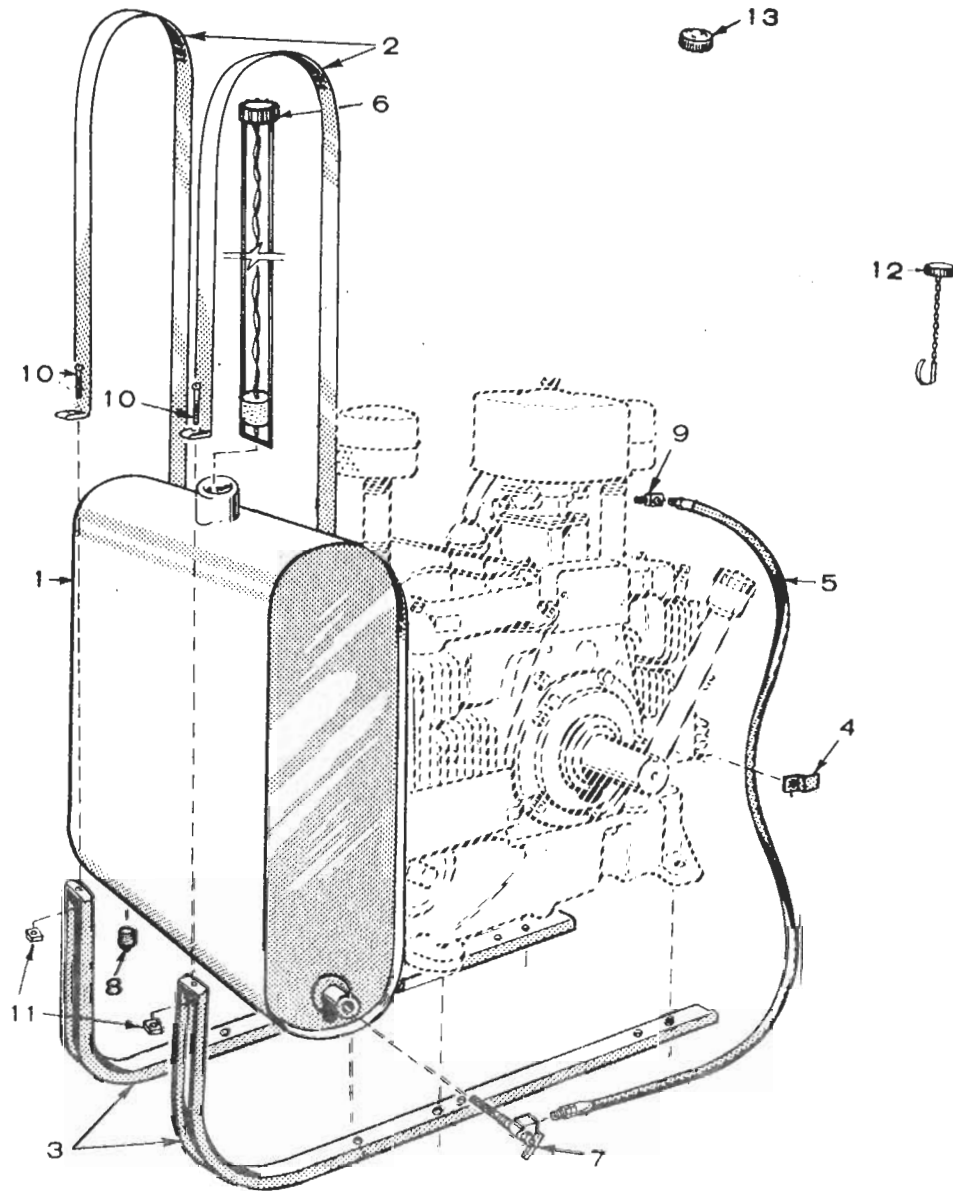


OPTIONAL GROUP 17 RESERVOIR (DAY) TANK 2 QUART



REF. NO.	PART NO.	QTY. USED	PART DESCRIPTION
	159-0942	1	Kit, Tank (Includes all parts in this group)
1	159-0041	1	Cap, Vent
2	415-0055	1	Bracket, Vent Cap
3	505-0028	1	Coupling, Pipe
4	505-0016	1	Bushing, Reducer (3/8 to 1/8")
5	502-0116	1	Connector, Compression
6	159-0345	1	Tubing, Copper (5/16 x 12")
7	502-0024	1	Elbow, Compression (90°)
8	159-0746	1	Tank, Reservoir
9	159-0936	1	Band, Reservoir Tank
10	159-0612	1	Bracket, Reservoir Tank Mounting
11	502-0020	1	Elbow, Street (90°)
12	501-0005	1	Line, Fuel - to Fuel Pump (18")
13	504-0086	1	Valve, Shut-off
14	501-0007	1	Line, Fuel - to Carburetor (24")
15	505-0057	1	Plug, Tank Drain
16	812-0156	1	Screw, Machine - Round Head (1/4-20 x 1-1/2")
17	850-0040	1	Washer, Lock - Spring (1/4")
18	861-0011	1	Nut, Square (1/4-20)

OPTIONAL GROUP 18 TANK, FUEL SIDE MOUNTED

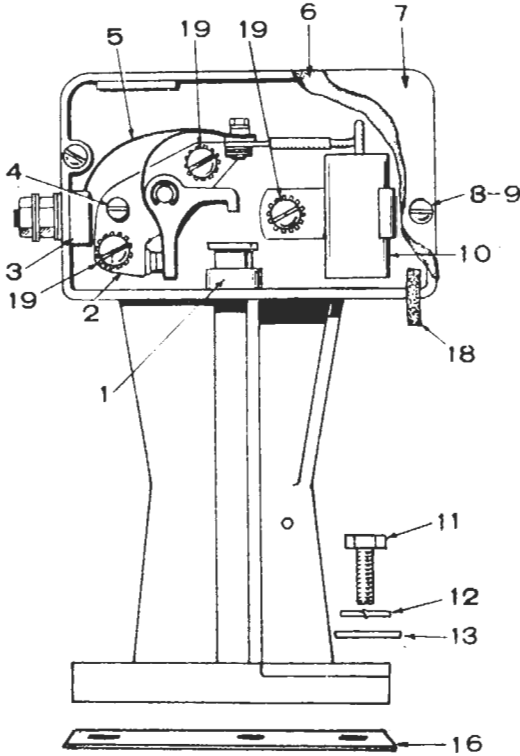


REF. NO.	PART NO.	QTY. USED	PART DESCRIPTION	REF. NO.	PART NO.	QTY. USED	PART DESCRIPTION
	159-0984	1	Kit, Fuel Tank with Gauge (Includes Parts Marked *)	7	504-0013	1	†*Valve, Shut-off
	159-0597	1	Kit, Fuel Tank Without Gauge (Includes Parts Marked †)	8	505-0057	1	†*Plug, Tank Drain
1	159-0981	1	†*Tank, Fuel (Less Cap)	9	502-0020	1	†*Elbow, Carburetor Inlet
2	159-0596	2	†*Strap, Fuel Tank	10	813-0108	2	†*Screw, Machine - Round Head (#10-32 x 1-1/2")
3	159-0595	2	†*Bracket, Fuel Tank	11	870-0053	2	†*Nut, Hex (#10-32)
4	134-0599	1	†*Clip, Fuel Line	12	159-0020	1	†Cap, Fuel Tank (For 2-5/16" Filler Neck) - Late Models
5	501-0008	1	†*Line, Fuel	13	159-0007	1	Cap, Fuel Tank (For 1-3/4" Filler Neck) - Early Models
6	193-0207	1	*Cap and Gauge, Fuel Tank (For 2-5/16" Filler Neck) - Late Models				

† - Included in 159-0597 Fuel Tank Kit.
* - Included in 159-0984 Fuel Tank Kit.

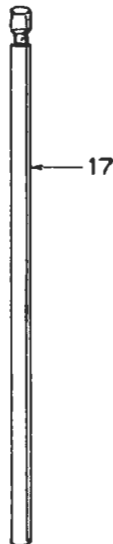
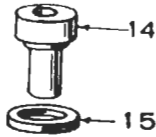
.927-0406 (MAY 1977)

OPTIONAL GROUP 19 BOX, HIGH PROFILE BREAKER

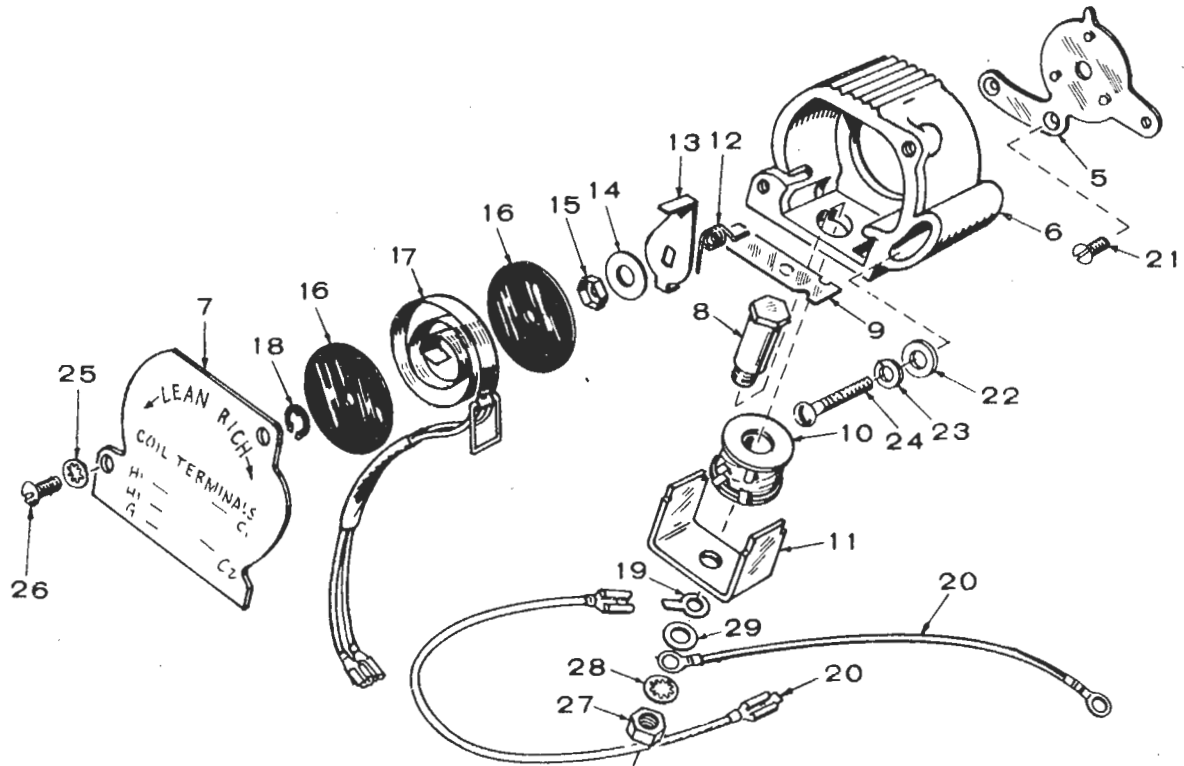


REF. NO.	PART NO.	QTY. USED	PART DESCRIPTION
	160-1135	1	Box Assembly, (Includes Parts Marked *)
1	160-0931	1	*Guide, Plunger
2	160-0002	1	*Point Set
3	160-0349	1	*Terminal and Block Assembly
4	160-0075	1	*Cam, Point Adjusting
5	160-0428	1	*Strap, Point Set to Terminal
6	160-0150	1	*Gasket, Cover
7	160-0930	1	*Cover, Breaker Box
8	850-0025	2	*Washer, Lock - Spring (#8)
9	812-0077	2	*Screw, Machine - Round Head (#8-32 x 3/8")
10	312-0069	1	*Condenser (.3 Mfd)
11	802-0035	2	*Screw, Socket Head (1/4-20 x 7/8")
12	850-0040	2	*Washer, Lock - Spring (1/4")
14	BUSHING, GUIDE		
	160-1041	1	*Begin Spec J
	160-0929	1	Spec A through H
15	150-1040	1	*Gasket, Mounting - Begin Spec J
16	160-0043	1	Gasket, Spec A through H
17	160-0723	1	*Plunger, Breaker
18	160-0261	1	*Wick
19	815-0285	3	*Screw, Machine - Round Head W/ET Washer (#8-32 x 5/16")

* - Parts Included in 160-1135 Breaker Box Assembly.

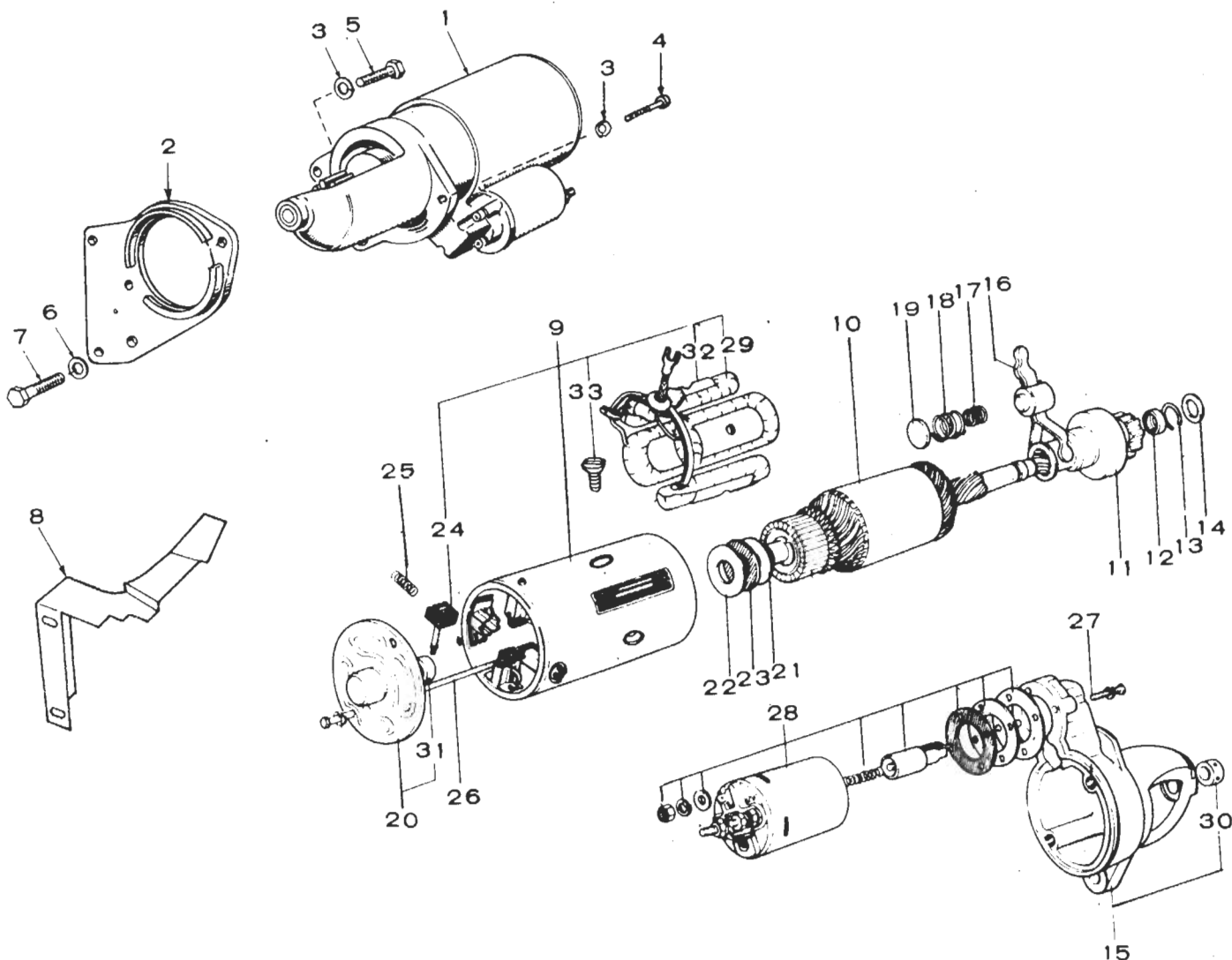


OPTIONAL GROUP 20 CHOKE, THERMO MAGNETIC



REF. NO.	PART NO.	QTY. USED	PART DESCRIPTION	REF. NO.	PART NO.	QTY. USED	PART DESCRIPTION
	153-0429	1	Replacement Kit (Includes Complete Choke - less leads)	18	518-0129	1	Ring, Retainer
5	153-0385	1	Plate, Mounting	19	332-0876	1	Terminal Ground
6	153-0386	1	Body	20	LEAD, CHOKE		
7	153-0389	1	Cover		336-1550	1	Choke to Ground
8	153-0391	1	Core, Solenoid		336-1549	1	Choke Solenoid Ground
9	153-0395	1	Armature	21	815-0161	2	Screw (10-32 x 3/8")
10	307-1203	1	Coil, Solenoid Assembly	22	526-0008	1	Washer, Flat
11	153-0392	1	Frame, Solenoid	23	850-0030	1	Washer (#10), Lock
12	153-0387	1	Spring	24	813-0107	1	Screw (10-32 x 1-1/4")
13	153-0390	1	Lever, Thermostat	25	854-0007	2	Washer (#8), Lock
14	526-0018	1	Washer	26	812-0076	2	Screw (8-32 x 5/16")
15	870-0134	1	Palnut (1/4-20)	27	864-0002	1	Nut (5/16-18), Jam
16	153-0399	2	Insulator	28	854-0017	1	Washer, (5/16), Lock
17	153-0400	1	Heater Assembly	29	526-0022	1	Washer, Flat

OPTIONAL GROUP 21 STARTING MOTOR SOLENOID SHIFT

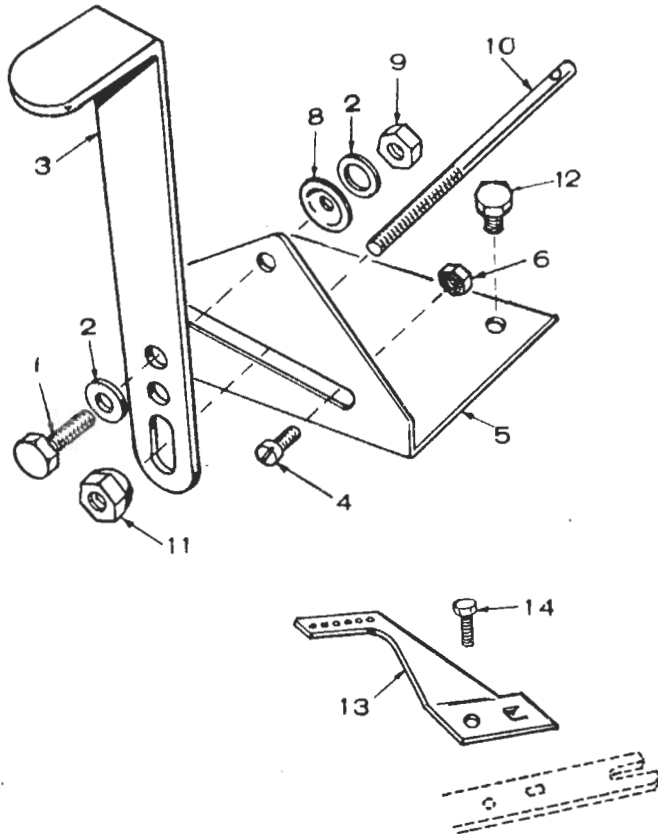


REF. NO.	PART NO.	QTY. USED	PART DESCRIPTION
1	191-0790	1	Motor, Starter (Includes Parts Marked *)
2	191-0508	1	Flange, Starter Motor
3	850-0050	2	Washer, Lock - Spring (3/8")
4	800-0049	1	Screw, Cap - Hex Head (3/8-16 x 7/8")
5	800-0050	1	Screw, Cap - Hex Head (3/8-16 x 1")
6	850-0050	2	Washer, Lock - Spring (3/8")
7	102-0455	2	Screw, Cap - Hex Head (3/8-16 x 1-1/4")
8	134-2131	1	Baffle, Air
9	191-0806	1	*Yoke Assembly (Frame) - Includes Parts Marked Δ
10	191-0743	1	*Armature
11	191-0744	1	*Clutch
12	191-0745	1	*Stop, Pinion
13	191-0746	1	*Ring
14	191-0806	1	*Washer, Plain
15	191-0808	1	*Bracket Assembly, Front
16	191-0749	1	*Lever Assembly

REF. NO.	PART NO.	QTY. USED	PART DESCRIPTION
17	191-0750	1	*Spring, Lever
18	191-0751	1	*Spring, Lever
19	191-0752	1	*Holder, Spring
20	191-0809	1	*Bracket Assembly, Rear
21	191-0754	1	*Washer, Plain
22	191-0755	1	*Washer, Plain
23	191-0756	1	*Washer, Insulation
24	191-0757	4	*ΔBrush
25	191-0758	4	*Spring, Brush
26	191-0759	2	*Bolt, Through
27	191-0760	3	*Screw, Machine
28	191-0761	1	*Switch Assembly, Solenoid
29	191-0762	1	*ΔCoil Assembly, Field
30	191-0763	1	*Bearing, Front
31	191-0764	1	*Bearing, Rear
32	191-0765	4	*ΔPole Shoe
33	191-0766	4	*ΔScrew

* - Included in 191-0790 Starter Motor.
 Δ - Included in 191-0806 Yoke Assembly.

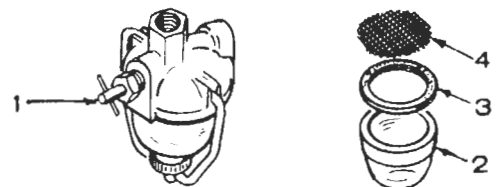
OPTIONAL GROUP 22 GOVERNOR, VARIABLE SPEED



REF. NO.	PART NO.	QTY. USED	PART DESCRIPTION
	152-0085	1	Bracket and Control Arm Assembly Variable Speed - Complete (Includes Parts Marked *)
1	800-0005	1	*Screw, Cap - Hex Head (1/4-20 x 3/4")
2	526-0015	2	*Washer, Flat (9/32" ID x 9/16" OD x 1/16" Thk)
3	152-0083	1	*Lever, Control
4	815-0199	2	*Screw, Machine - Fillister Head (#10-32 c 5/16")
5	152-0086	1	*Bracket, Mounting
6	870-0131	2	*Nut, Hex with ET Lock Washer (#10-32)
8	152-0041	1	*Washer, Tension
9	870-0065	1	*Nut, Hex - Self Locking (1/4-20)
10	152-0090	1	Stud, Speed Adjusting
11	150-0621	1	Nut, Special - Speed Adjusting Stud
12	821-0008	2	Screw, Cap - Hex Head Locking (1/4-20 x 5/16")
13	150-1000	1	Extension, Governor Arm
14	815-0181	1	Screw, Cap - Hex Head with ET Lock Washer (#10-32 x 1/2")

OPTIONAL GROUP 23 FUEL FILTER PARTS

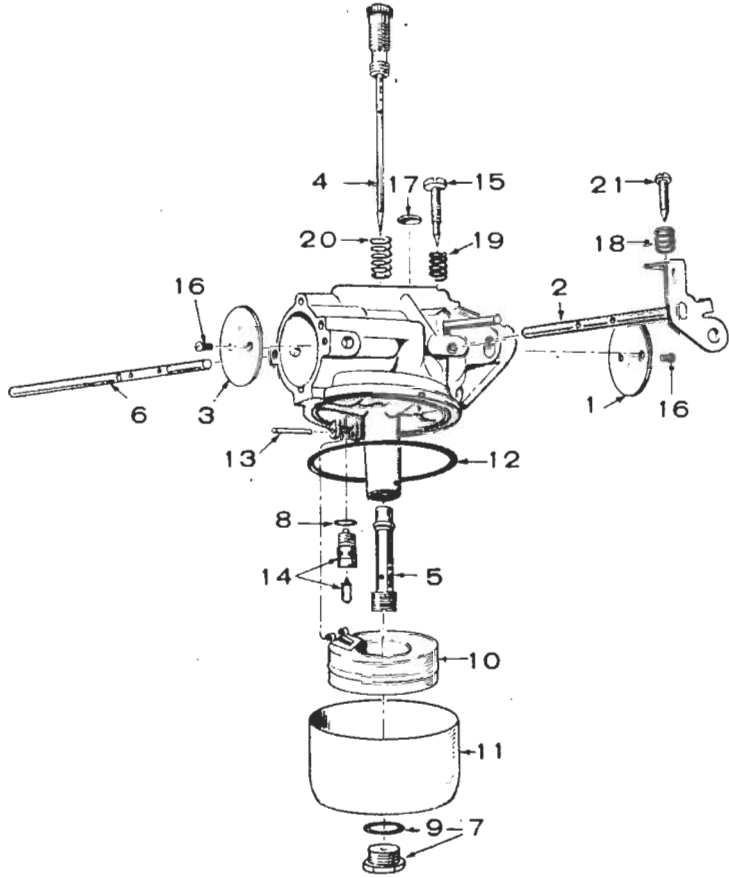
REF. NO.	PART NO.	QTY. USED	PART DESCRIPTION
1	149-0079	1	Bowl Assembly, Sediment - Complete
2	149-0150	1	Bowl Only
3	149-0149	1	Gasket, Bowl Mounting
4	149-0202	1	Screen



OPTIONAL GROUP 24
(141-0792)
SPEC G ONLY

REF. NO.	PART NO.	QTY. USED	PART DESCRIPTION
CARBURETOR, GASOLINE			
	141-0792	1	Electric Choke
	143-0332	1	Repair Kit (Includes Parts Marked**)
	143-0201	1	**Gasket Kit (Includes Parts Marked*)
	141-0281	1	*Gasket, Carburetor Flange
1	143-0202	1	Valve, Throttle
2	143-0331	1	Shaft and Lever, Throttle
3	143-0204	1	Valve, Choke - Electric Choke
4	143-0330	1	**Needle, Idle Jet and High Speed Adjusting
5	143-0329	1	**Nozzle
6	143-0315	1	Shaft, Choke - Electric Choke
7	143-0208	1	Screw and Gasket, Bowl
8	143-0015	1	*Gasket, Fuel Inlet Valve
9	143-0209	1	*Gasket, Bowl Screw
10	143-0297	1	Float and Lever
11	143-0210	1	Bowl
12	143-0077	1	*Gasket, Bowl Ring
13	143-0212	1	**Pin, Float Lever
14	143-0341	1	**Valve, Fuel Inlet
15	143-0213	1	Screw, Idle Adjusting
16	812-0014	4	**Screw (#3-48 x 3/16) - Choke and Throttle Valve
17	143-0110	1	Plug, Expansion
18	143-0214	1	Spring, Throttle Adjusting Screw
19	143-0112	1	Spring, Idle Adjusting Screw
20	143-0114	1	Spring, High Speed Adjusting Needle
21	143-0215	1	Screw, Throttle Lever Adjusting
29	143-0342	1	Diaphragm - Electric Choke

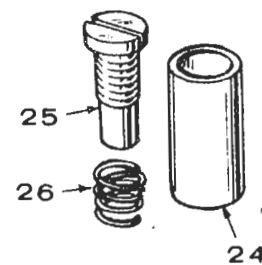
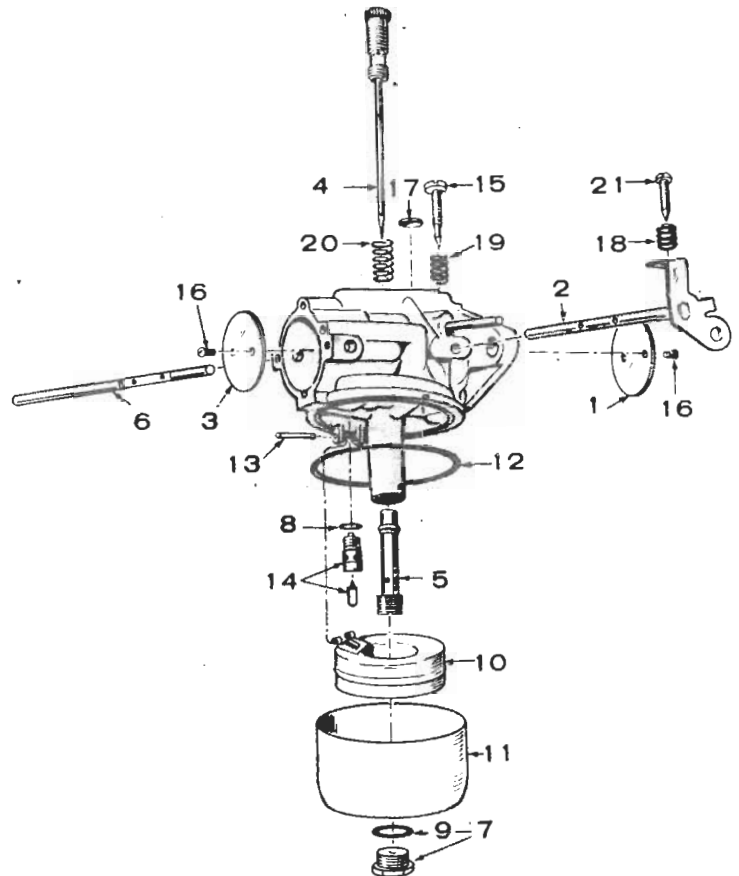
* - Contained in Gasket Kit.
 ** - Contained in Repair Kit.



OPTIONAL GROUP 25
(143-0338)
SPEC G ONLY

REF. NO.	PART NO.	QTY. USED	PART DESCRIPTION
CARBURETOR, GAS-GASOLINE			
	143-0338	1	Manual Choke
	143-0332	1	Repair Kit (Includes Parts Marked **)
	143-0201	1	**Gasket Kit (Includes Parts Marked *)
	141-0281	1	*Gasket, Carburetor Flange
1	143-0202	1	Valve, Throttle
2	143-0331	1	Shaft and Lever, Throttle
3	143-0220	1	Valve, Choke - Manual Choke
4	143-0330	1	**Needle, Idle Jet and High Speed Adjusting
5	143-0329	1	**Nozzle
6	143-0221	1	Shaft and Lever, Choke - Manual Choke
7	143-0208	1	Screw and Gasket, Bowl
8	143-0015	1	*Gasket, Fuel Inlet Valve
9	143-0209	1	*Gasket, Bowl Screw
10	143-0297	1	Float and Lever
11	143-0210	1	Bowl
12	143-0077	1	*Gasket, Bowl Ring
13	143-0212	1	**Pin, Float Lever
15	143-0213	2	Screw, Idle Adjusting
16	812-0014	4	**Screw (#3-48 x 3/16") - Choke and Throttle Valve
17	143-0110	1	Plug, Expansion
18	143-0214	1	Spring, Throttle Adjusting Screw
19	143-0112	2	Spring, Idle Adjusting Screw
20	143-0114	1	Spring, High Speed Adjusting Needle)
21	143-0215	1	Screw, Throttle Lever Adjusting
24	145-0308	1	Tube, Gas Inlet - Gas-Gasoline Only
25	148-0589	1	Needle, Gas Adjusting - Gas-Gasoline
26	148-0590	1	Spring, Gas Adjusting - Gas-Gasoline

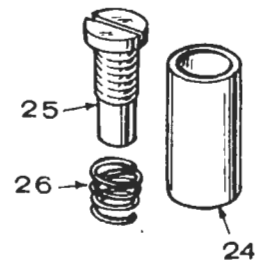
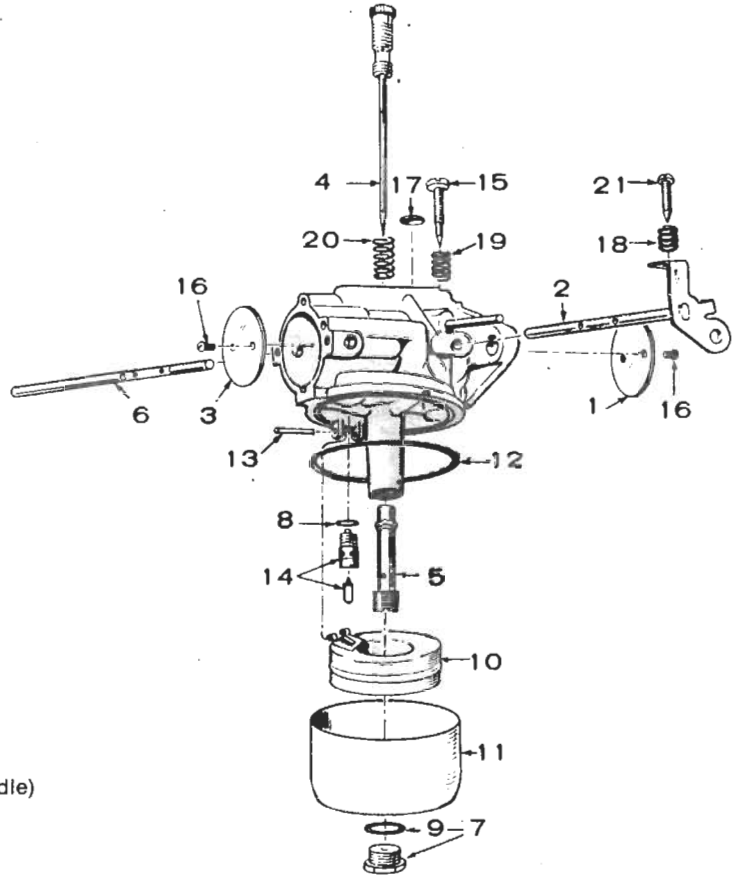
* - Contained in Gasket Kit.
** - Contained in Repair Kit.



**OPTIONAL GROUP 26
CARBURETOR PARTS
(143-0339)
SPEC G ONLY**

REF. NO.	PART NO.	QTY. USED	PART DESCRIPTION
CARBURETOR, GAS-GASOLINE			
	143-0339	1	Electric Choke
	143-0332	1	Repair Kit (Includes Parts Marked **)
	143-0201	1	**Gasket Kit (Includes Parts Marked *)
	141-0281	1	*Gasket, Carburetor Flange
1	143-0202	1	Valve, Throttle
2	143-0331	1	Shaft and Lever, Throttle
3	143-0204	1	Valve, Choke - Electric Choke
4	143-0330	1	**Needle, Idle Jet and High Speed Adjusting
5	143-0329	1	**Nozzle
6	143-0315	1	Shaft, Choke - Electric Choke
7	143-0208	1	Screw and Gasket, Bowl
8	143-0015	1	*Gasket, Fuel Inlet Valve
9	143-0209	1	*Gasket, Bowl Screw
10	143-0297	1	Float and Lever
11	143-0210	1	Bowl
12	143-0077	1	*Gasket, Bowl Ring
13	143-0212	1	**Pin, Float Lever
15	143-0213	2	Screw, Idle Adjusting
16	812-0014	4	**Screw (#3-48 x 3/16) - Choke and Throttle Valve
17	143-0110	1	Plug, Expansion
18	143-0214	1	Spring, Throttle Adjusting Screw
19	143-0112	2	Spring, Idle Adjusting Screw
20	143-0114	1	Spring, High Speed Adjusting Needle)
21	143-0215	1	Screw, Throttle Lever Adjusting
24	145-0308	1	Tube, Gas Inlet
25	148-0589	1	Needle, Gas Adjusting
26	148-0590	1	Spring, Gas Adjusting
29	143-0342	1	Diaphragm - Electric Choke

* - Contained in Gasket Kit.
** - Contained in Repair Kit.

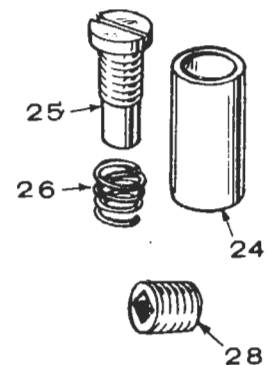
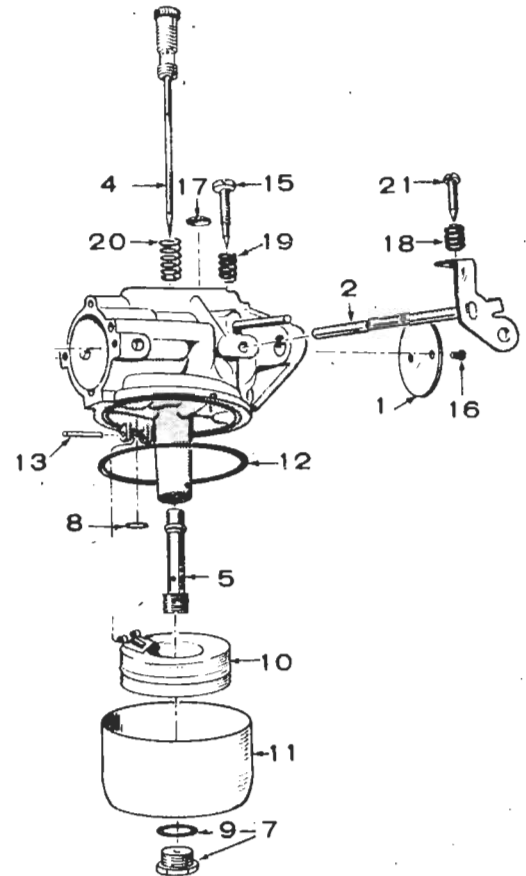


**OPTIONAL GROUP 27
CARBURETOR PARTS
(143-0340)
SPEC G ONLY**

REF. NO.	PART NO.	QTY. USED	PART DESCRIPTION
	CARBURETOR, GAS		
	143-0340	1	Carburetor, Gas
	143-0332	1	Repair Kit (Includes Parts Marked **)
	143-0201	1	**Gasket Kit (Includes Parts Marked *)
	141-0281	1	*Gasket, Carburetor Flange
1	143-0202	1	Valve, Throttle
2	143-0331	1	Shaft and Lever, Throttle
4	143-0330	1	**Needle, Idle Jet and High Speed Adjusting
5	143-0329	1	**Nozzle
7	143-0208	1	Screw and Gasket, Bowl
8	143-0015	1	*Gasket, Fuel Inlet Valve
9	143-0209	1	*Gasket, Bowl Screw
10	143-0297	1	Float and Lever
11	143-0210	1	Bowl
12	143-0077	1	*Gasket, Bowl Ring
15	143-0213	1	Screw, Idle Adjusting
16	812-0014	4	**Screw (#3-48 x 3/16) - Choke and Throttle Valve
17	143-0110	1	Plug, Expansion
18	143-0214	1	Spring, Throttle Adjusting Screw
19	143-0112	1	Spring, Idle Adjusting Screw
20	143-0114	1	Spring, High Speed Adjusting Needle)
21	143-0215	1	Screw, Throttle Lever Adjusting
24	145-0308	1	Tube, Gas Inlet
25	148-0589	1	Needle, Gas Adjusting
26	148-0590	1	Spring, Gas Adjusting
28	505-0008	1	Plug (1/8")

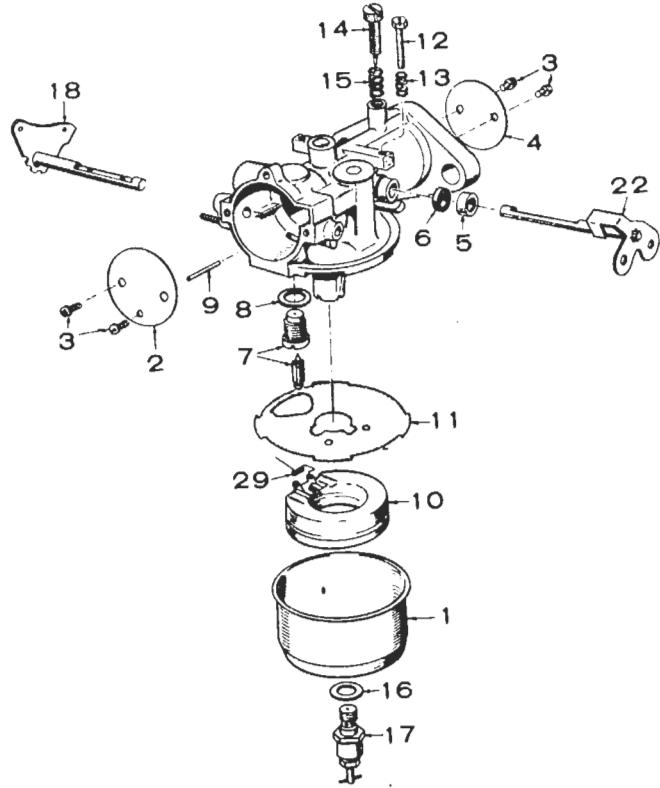
* - Contained in Gasket Kit.

** - Contained in Repair Kit.



**OPTIONAL GROUP 28
CARBURETOR PARTS
(141-0690)
BEGIN SPEC H**

REF. NO.	PART NO.	QTY. USED	PART DESCRIPTION
CARBURETOR, GASOLINE			
	141-0690	1	Electric Choke
	141-0747	1	Repair Kit (Includes Parts Marked *)
	141-0748	1	Gasket Kit (Includes Parts £)
	141-0281	1	£*Gasket, Carburetor Flange
1	141-0708	1	Bowl, Fuel
2	141-0741	1	Plate, Choke
3	141-0698	4	Screw & Washer, Choke and Throttle Plate Mounting
4	141-0706	1	Plate, Throttle
5	141-0705	1	*Retainer, Seal
6	141-0661	1	£*Seal, Rubber
7	141-0798	1	*Valve Seat Assembly, Fuel
8	141-0811	1	£Washer, Fuel Valve Seat
9	141-0703	1	*Shaft, Float
10	141-0702	1	Float Assembly
11	141-0701	1	£*Gasket, Bowl to Body
12	141-0700	1	Screw, Throttle Stop
13	141-0711	1	Spring, Throttle Stop
14	141-0713	1	Needle, Idle Adjusting
15	141-0710	1	Spring, Idle Needle
16	141-0077	1	£*Washer, Main Jet Assembly
17	141-0712	1	Jet Assembly, Main (Adjustable)
18	141-0679	1	Shaft, Choke
22	141-0709	1	Shaft and Lever, Throttle
29	141-0799	1	*Spring, Float

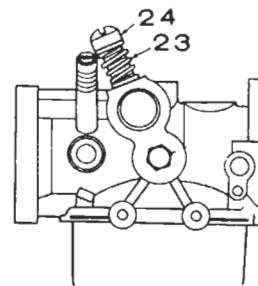
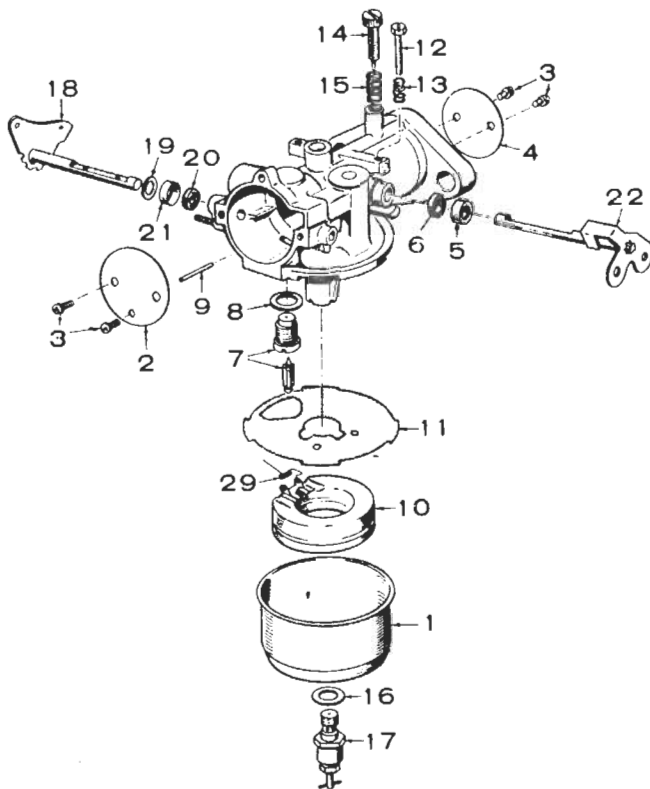


* - Parts contained in Repair Kit.
£ - Parts contained in Gasket Kit.

**OPTIONAL GROUP 29
CARBURETOR PARTS
(141-0721)
BEGIN SPEC H**

REF. NO.	PART NO.	QTY. USED	PART DESCRIPTION
	CARBURETOR, GAS-GASOLINE		
	141-0721	1	Manual Choke
	141-0747	1	Repair Kit (Includes Parts Marked *)
	141-0748	1	Gasket Kit (Includes Parts Marked £)
	141-0281	1	£*Gasket, Carburetor Flange
1	141-0708	1	Bowl, Fuel
2	141-0741	1	Plate, Choke
3	141-0698	4	Screw & Washer, Choke and Throttle Plate Mounting
4	141-0706	1	Plate, Throttle
5	141-0705	1	*Retainer, Seal
6	141-0661	1	£*Seal, Rubber
7	141-0798	1	*Valve Seat Assembly, Fuel
8	141-0811	1	£Washer, Fuel Valve Seat
9	141-0703	1	*Shaft, Float
10	141-0702	1	Float Assembly
11	141-0701	1	£*Gasket, Bowl to Body
12	141-0700	1	Screw, Throttle Stop
13	141-0711	1	Spring, Throttle Stop
14	NEEDLE, IDLE ADJUSTING		
	141-0713	2	Gas-Gasoline Units
15	SPRING, IDLE NEEDLE		
	141-0710	2	Gas-Gasoline Units
16	141-0077	1	£*Washer, Main Jet Assembly
17	141-0712	1	Jet Assembly, Main (Adjustable)
18	SHAFT, CHOKE		
	141-0742	1	Manual Choke Units
19	141-0699	1	Washer
20	141-0697	1	£*Seal, Felt
21	141-0203	1	*Retainer, Felt Seal
22	141-0709	1	Shaft and Lever, Throttle
23	141-0733	1	Spring, Main Gas Needle
24	141-0734	1	Needle, Main Gas Adjusting
29	141-0799	1	*Spring, Float

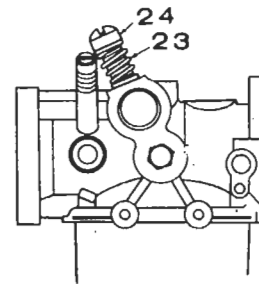
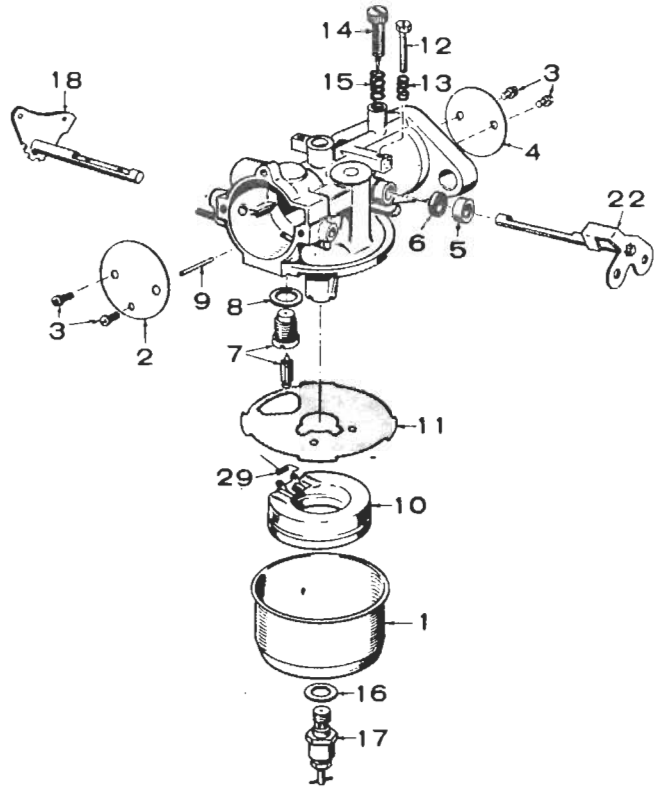
* - Parts contained in Repair Kit.
£ - Parts contained in Gasket Kit.



**OPTIONAL GROUP 30
CARBURETOR PARTS
(141-0722)
BEGIN SPEC H**

REF. NO.	PART NO.	QTY. USED	PART DESCRIPTION
CARBURETOR, GAS-GASOLINE			
	141-0722	1	Electric Choke
	141-0747	1	Repair Kit (Includes Parts Marked *)
	141-0748	1	Gasket Kit (Includes Parts Marked £)
	141-0281	1	£*Gasket, Carburetor Flange
1	141-0708	1	Bowl, Fuel
2	141-0741	1	Plate, Choke
3	141-0698	4	Screw & Washer, Choke and Throttle Plate Mounting
4	141-0706	1	Plate, Throttle
5	141-0705	1	*Retainer, Seal
6	141-0661	1	£*Seal, Rubber
7	141-0798	1	*Valve Seat Assembly, Fuel
8	141-0811	1	£Washer, Fuel Valve Seat
9	141-0703	1	*Shaft, Float
10	141-0702	1	Float Assembly
11	141-0701	1	£*Gasket, Bowl to Body
12	141-0700	1	Screw, Throttle Stop
13	141-0711	1	Spring, Throttle Stop
14	NEEDLE, IDLE ADJUSTING		
	141-0713	2	Gas-Gasoline Units
15	SPRING, IDLE NEEDLE		
	141-0710	2	Gas-Gasoline Units
16	141-0077	1	£*Washer, Main Jet Assembly
17	141-0712	1	Jet Assembly, Main (Adjustable)
18	SHAFT, CHOKE		
	141-0716	1	Electric Choke
22	141-0709	1	Shaft and Lever, Throttle
23	141-0733	1	Spring, Main Gas Needle - Gas-Gasoline Units
24	141-0734	1	Needle, Main Gas Adjusting - Gas-Gasoline Units
29	141-0799	1	*Spring, Float

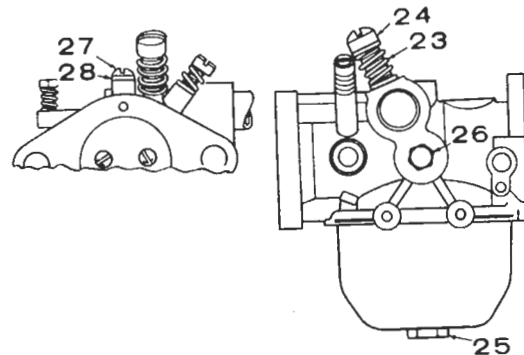
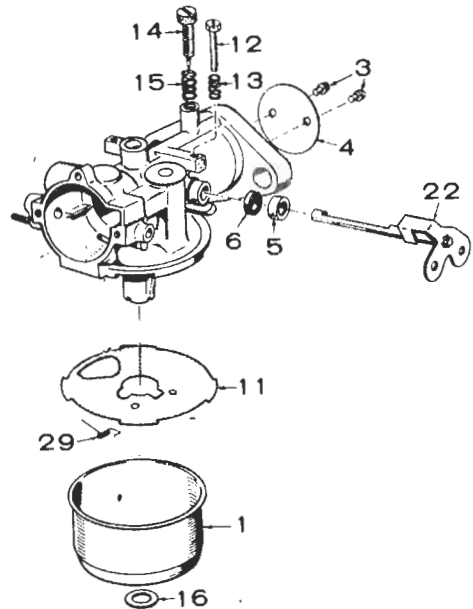
* - Parts contained in Repair Kit.
£ - Parts contained in Gasket Kit.



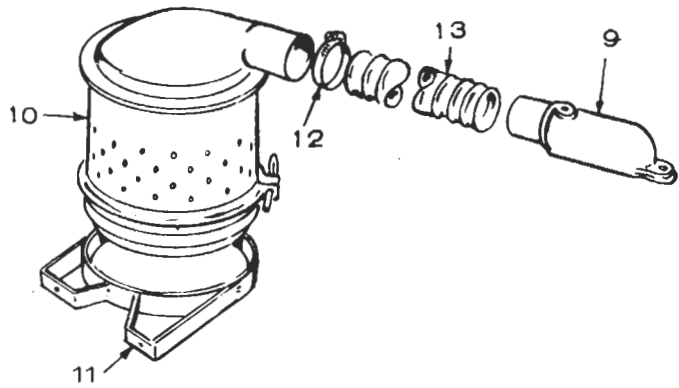
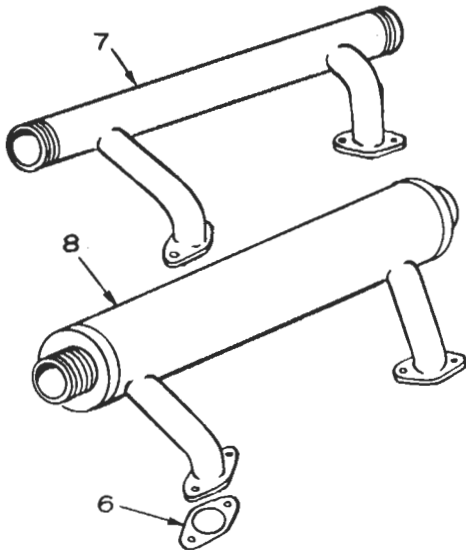
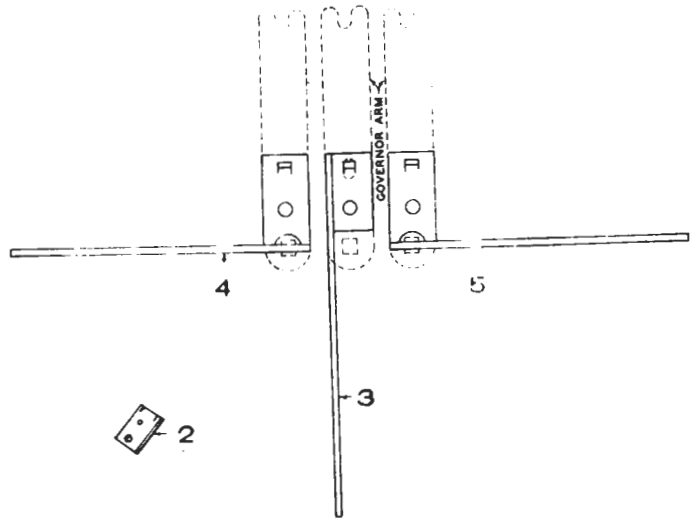
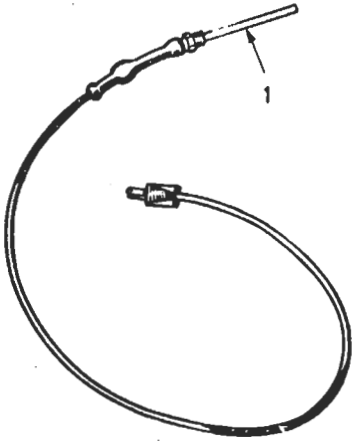
**OPTIONAL GROUP 31
CARBURETOR PARTS
(141-0744)
BEGIN SPEC H**

REF. NO.	PART NO.	QTY. USED	PART DESCRIPTION
	141-0744	1	Carburetor, Gas
	141-0747	1	Repair Kit (Includes Parts Marked *)
	141-0748	1	Gasket Kit (Includes Parts Marked £)
	141-0281	1	£*Gasket, Carburetor Flange
1	141-0708	1	Bowl, Fuel
3	141-0698	2	Screw & Washer, Choke and Throttle Plate Mounting
4	141-0706	1	Plate, Throttle
5	141-0705	1	*Retainer, Seal
6	141-0661	1	£*Seal, Rubber
11	141-0701	1	£*Gasket, Bowl to Body
12	141-0700	1	Screw, Throttle Stop
13	141-0711	1	Spring, Throttle Stop
14	NEEDLE, IDLE ADJUSTING		
	141-0822	1	Gas Only Units
15	SPRING, IDLE NEEDLE		
	141-0710	1	Gas Only Units
16	141-0077	1	£*Washer, Main Jet Assembly
22	141-0709	1	Shaft and Lever, Throttle
23	141-0733	1	Spring, Main Gas Needle
24	141-0734	1	Needle, Main Gas Adjusting
25	141-0736	1	Nut, Bowl
26	141-0737	1	Plug (1/8"), Pipe
27	141-0738	1	Screw (#10-32)
28	141-0739	1	Washer
29	141-0799	1	*Spring, Float

* - Parts contained in Repair Kit.
£ - Parts contained in Gasket Kit.



MISCELLANEOUS PARTS



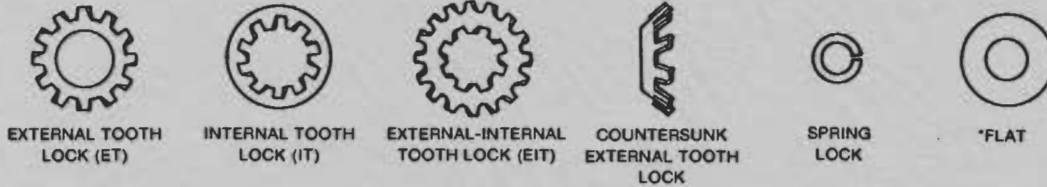
MISCELLANEOUS PARTS

REF. NO.	PART NO.	QTY. USED	PART DESCRIPTION	REF. NO.	PART NO.	QTY. USED	PART DESCRIPTION
1	102-0558	1	Heater, Oil Base	7	154-0998	1	Manifold, Exhaust
	ARM, GOVERNOR PULL - CONSTANT SPEED GOVERNOR			8	154-0906	1	Muffler, Exhaust
2	150-0635	1	Rear Pull	9	140-0645	1	Adapter, Air Cleaner
3	150-0755	1	Front Pull	10	140-0500	1	Cleaner, Air
4	150-0790	1	Left Pull	11	140-0519	1	Band, Air Cleaner
5	150-0752	1	Right Pull	12	503-0365	2	Clamp, Air Cleaner Hose
6	154-0973	2	Gasket, Exhaust Manifold	13	503-0444	1	Hose, Air Cleaner

HARDWARE IDENTIFICATION

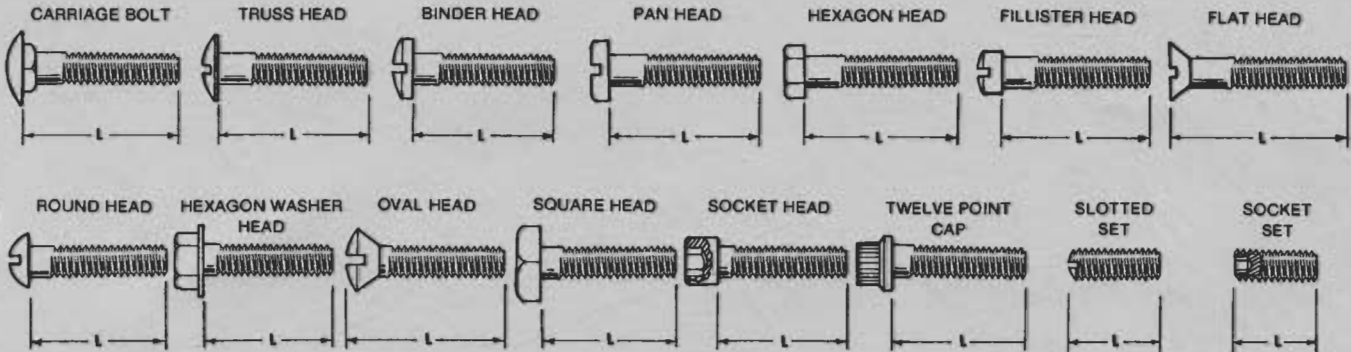
Illustrated hardware items are only for identification purposes. All hardware items listed throughout this parts catalog are steel SAE grade five (5) or lower (zinc plated with clear chromate dip) unless parts description indicates differently. All dimensions are in inches.

WASHER TYPES



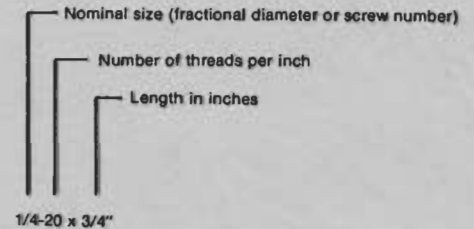
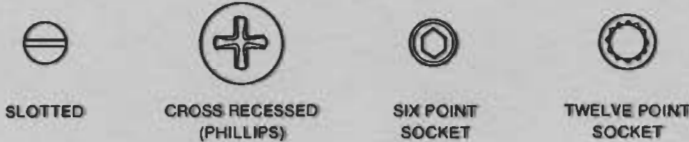
* - Flat washer dimensions given are: Inside Diameter (ID), Outside Diameter (OD) and Thickness (Thk).

BOLT AND SCREW TYPES



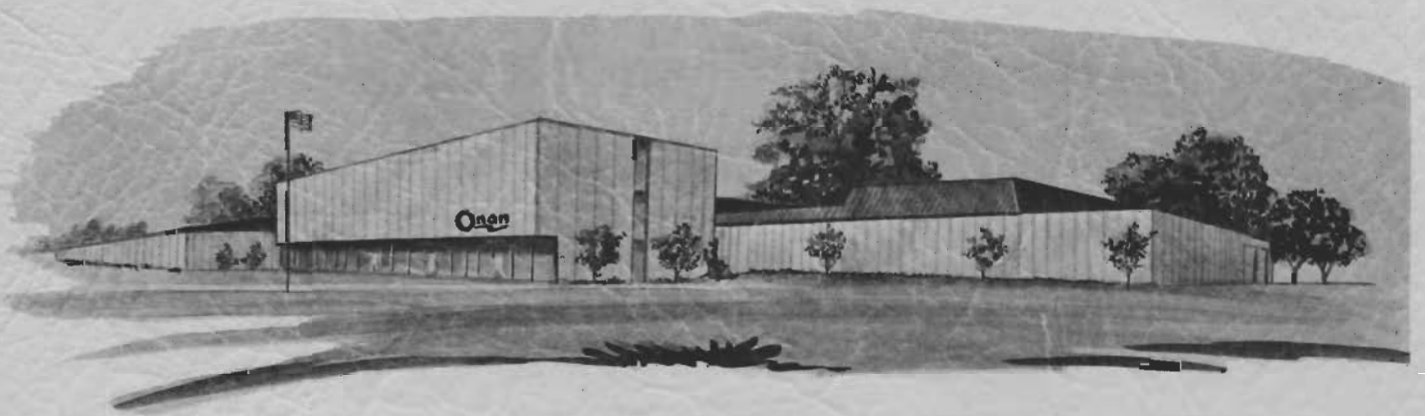
L - Measure length between these points.

INTERNAL DRIVE TYPES



NUT TYPES





ONAN 1400 73RD AVENUE N.E. • MINNEAPOLIS, MINNESOTA 55432
A DIVISION OF ONAN CORPORATION

