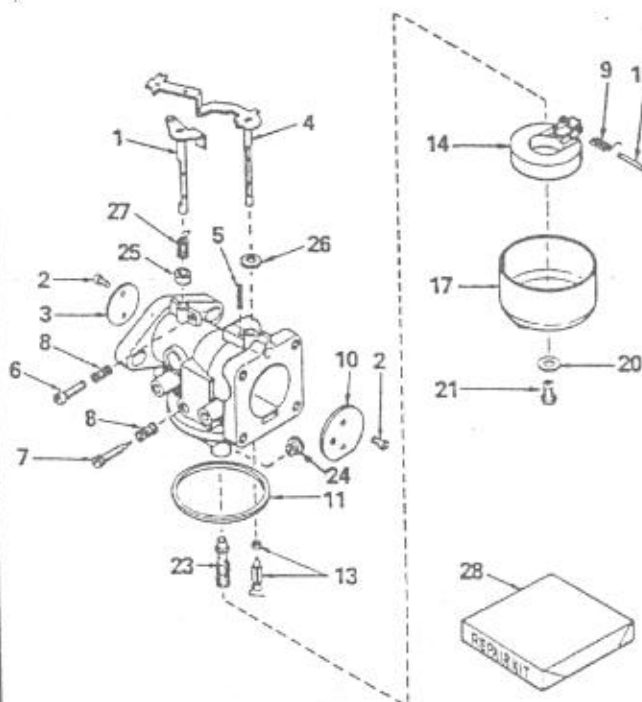


WOODINGS - RAILCAR LIMITED

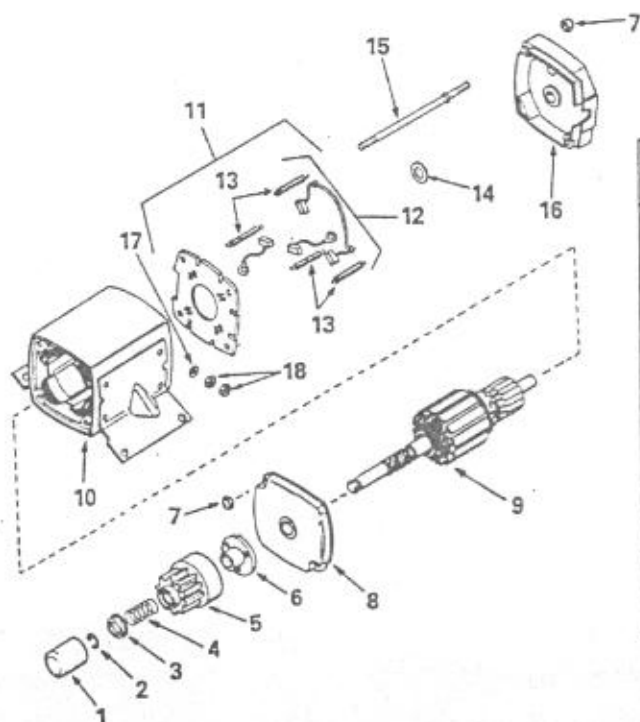
P.O. Box 610, Lancaster, Ontario, Canada K0C 1N0
[513] 347-2483 [514] 879-1129 Telex 05-811567

CARBURETOR NO. 632159A



Ref. No.	Part No.	Part Name
1	632159A	Carburetor
2	632180	Shaft & Lever Assy., Throttle (Incl. No. 2)
3	650506	Screw, Throttle & Choke shutter
4	631682	Shutter, Throttle
5	631683	Shaft & Lever Assy., Choke (Incl. No. 2)
6	27113	Spring, Choke stop
7	650399	Screw, Throttle adjusting
8	*27112	Needle, Idle adjusting
9	27114	Spring, Adjusting
10	31503	Spring, Float shaft
11	631684	Shutter, Choke
12	*27109	Gasket, Bowl-to-body
13	*631687	Valve, Seat & Spring Assy. (Incl. No. 9)
14	27105	Float
15	*27106	Shaft, Float
16	29170	Bowl, Fuel
17	*27110	Gasket, Bowl-to-body
18	*631713	Nut, Float bowl
19	632330	Nozzle, Main
20	632360	Fuel jet, Main
21	632039	Seal, Throttle shaft dust
22	632040	Seal, Choke shaft dust
23	32096	Spring, Throttle return
24	*631719	Repair Kit (Incl. items marked *)

STARTER MOTOR NO. 33835



Ref. No.	Part No.	Part Name
1	33835	Starter Motor, Complete
2	33841	Cover, Dust
3	33842	Ring, Retainer
4	33843	Retainer, Spring
5	33844	Spring, Anti-drift
6	33845	Gear
7	33846	Nut, Engaging
8	33847	Nut, Lock
9	33848	Cap Assy., Drive end
10	33849	Armature
11	33850	Housing
12	33851	Card Assy., Brush (Incl. No. 12)
13	33852	Brush & Spring Kit (Incl. 4 pcs. of No. 13)
14	33853	Spring, Brush
15	590500	Washer, Thrust
16	33851	Bolt, 10-32 x 5-1/4
17	33852	Cap Assy., Commutator end
18	650188	Washer, Flat
19	650723	Nut, Hex